



Citizen Perception Survey

Conducted by

Saint Martin's University

July 2012

Port of Olympia Citizen Perception Survey¹

Executive Summary

This study was conducted to assess Thurston County citizen perceptions and opinions of Port of Olympia's activities. A random, representative telephone survey of both landline and mobile numbers was conducted to assess how citizens obtain their information, as well as to learn their levels of awareness about several specific Port activities. A total of 4,500 numbers were called and 389 questionnaires were completed resulting in a 95 percent confidence level and a margin of error of 5 percent.

The first eight questions in the questionnaire dealt with understanding and support for various Port activities. Of those, questions dealing with supporting environmental efforts, expanding recreational boating, dredging Budd Inlet, supporting the airport, and fostering economic development and job creation in rural Thurston County, all generated strong support from those surveyed. Question one, or overall understanding of the role of the Port, was the only one that was skewed more towards the lower end of the scale in that there still appears to be a lack of good understanding of the role of the Port in Thurston County.

Citizens were also asked what types of development that would most prefer to see on Port property in downtown Olympia. Of the development options for Port property in downtown Olympia, the park option was the only one that received very strong support with 47 percent of those responding stating that as their preferred choice. The next top choice was restaurants and cafes. The only development choice that had little support was for pursuing manufacturing. The options of hotel, apartments, and boating facilities had modes of three.

Finally, those surveyed were asked to share how they currently learn about the Port of Olympia and how they would like to be notified about Port activities. The printed version of the Olympian and word of mouth were the top methods mentioned for obtaining information. When asked how they would like to be notified, the Port's website was also mentioned as a preferred choice to supplement the printed version of the Olympian.

Introduction

¹ Riley Moore, Ph.D., Associate Professor of Economics, School of Business, Saint Martin's University and conducted with the assistance of Saint Martin's University students

The Port of Olympia has been an integral part of Thurston County since its inception in 1922. It has continued to evolve as it has grown. In order to assess how it is doing, The Port of Olympia commissioned Saint Martin's University to assess Thurston County citizens' perceptions of the Port of Olympia. This is the second such study for the Port². A telephone survey was conducted to assess how people get their information, as well as their general awareness of Port assets and activities.

Methods

Over several weeks, Saint Martin's University students conducted a telephone survey³ of citizens of Thurston County. Beforehand the Internal Review Board at Saint Martin's University had reviewed the survey. Furthermore, a representative random sample was compiled to ensure that all citizens of Thurston County had an equal chance of being selected. Students called approximately 4,500 household numbers to obtain 389 completed questionnaires. The students made calls on both week nights and weekends between the hours of 5-9 pm at the Saint Martin's University Office of Institutional Advancement call center.

A sample size of 384 completed questionnaires was necessary to ensure that the results are reflective of community perceptions of the Port of Olympia. This ensures a 95 percent confidence level with a margin of error of plus or minus 5 percent.⁴ The size was based on a 50/50 split (meaning that the population was assumed to be relatively varied), based on population characteristics. This sample size was also based on the assumption that the population of Thurston County is approximately 250,000 residents⁵. This study exceeded that benchmark with 389 completed questionnaires.

Results

² Kathleen White, Port of Olympia Communications & Government Relations Manager, who proposed the idea to conduct the study and provided the questions for the questionnaire. She also spearheaded the first study in 2010.

³ Telephone numbers included both land-line and mobile numbers. Telephone numbers were obtained from GENESYS Sampling Systems, a widely respected survey research sampling company based out of Fort Washington, Pennsylvania.

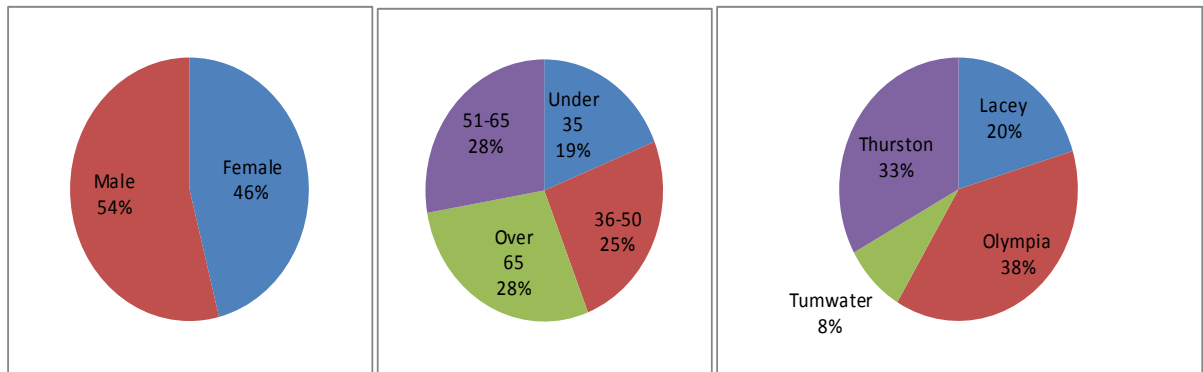
⁴ These terms simply mean that if the survey were conducted 100 times, the data would be within 5 percentage points above or below the percentage reported in 95 of the 100 surveys. For example, if 17 percent of the respondents answer "yes" to watching TCTV, this means that if the survey were conducted 100 times, the percentage who say "yes" will range between 12 and 22 percent most (95 percent) of the time.

⁵ Thurston Regional Planning Council.

The questionnaire⁶ was composed of eleven questions which addressed how aware Thurston County residents are of Port and how they receive information about the Port’s activities and decisions. Demographic information such as the respondents’ gender, age, and residence within Thurston County were collected as well. The demographic information further enables cross-tabulations⁷ to be conducted for each of the questions, to assess differences in perceptions based on the above demographics. Cross tabulation tables for selected questions are appendices of this report.⁸

Figure 1 below provides a quick overview of the demographics of the survey respondents. Regarding gender, 54 percent of those that responded were male and the remaining 46 percent were female. When assessing age, 56 percent indicated they were 51 years of age or older. Olympia was where the largest group of respondents, at 38 percent, resided.

Figure 1. Demographics of those surveyed, by percentage for gender, age and residence, Port of Olympia, July 2012.



Respondents were asked to rank their preferences on a scale of one to five, with five representing the strongest preference, for eight questions pertaining to understanding of Port activities. Both actual number and percentage of responses for the first eight questions are illustrated in Table 1 below.

⁶ See appendices for a copy of the questionnaire.

⁷ Cross Tabulation tables (often also referred to as "cross tabs" or contingency tables) numerically display the results of a survey, showing how the answers to one survey question break down according to the answers to another question or other data derived from the sample.

⁸ This preliminary report is a "topline" report, which presents the breakdown of answers to the specific survey questions, in terms of the overall percentage of *all* respondents. Thus an in depth analysis of the cross-tabulation relationships goes beyond the scope of this document; the cross-tabulation tables are simply provided to satiate the curiosity of those most interested readers, as well as to serve as a starting point for further future analysis.

Table 1. Responses to survey questions regarding understand of the role and policies of the Port of Olympia, by actual number and percentage, Port of Olympia, July 2012.

Scale	---Q1---		---Q2---		---Q3---		---Q4---		---Q5---		---Q6---		---Q7---		---Q8---	
	#	%	#	%	#	%	#	%	#	%	#	%	#	%	#	%
Least 1	106	27%	53	14%	22	6%	36	9%	29	8%	55	14%	27	7%	20	5%
2	80	21%	39	10%	23	6%	53	14%	34	9%	62	16%	31	8%	22	6%
3	109	28%	76	20%	50	13%	106	28%	101	27%	114	30%	65	17%	64	17%
4	60	15%	85	22%	91	24%	78	20%	96	25%	87	23%	97	25%	99	26%
Most 5	34	9%	134	35%	199	52%	110	29%	120	32%	63	17%	161	42%	173	46%
Sum	389	100%	387	100%	385	100%	383	100%	380	100%	381	100%	381	100%	378	100%
Mode	3		5		5		5		5		3		5		5	

Question Key:
Q1 = How familiar are you with the role of the Port of Olympia?
Q2 = How important is it to you to see the Port, which is an international seaport, increase its shipping business?
Q3 = How important is it to you for the Port of Olympia to commit resources towards any environmental issues on Port-owned property?
Q4 = How important is it to you for the Port of Olympia to expand the oppoprunities for recreational boating in Budd Inlet and Thurston County waters?
Q5 = The Port requires periodic dredging to continue its marine operations. Dredging also helps clean up Budd Inlet. How supportive are you of using public dollars to drege Budd Inlet?
Q6 = How important is it for the Port of Olympia to add a fuel dock on Port property for fuel sales to local boaters and to boaters who visit Thurston County?
Q7 = How supportive are you of the current aviation services at the Olympia Regional Airport which include: Air ambulance, State Patrol law enforcement, fire suppression, Sate Fish and Wildlife programs, civilian and military flight training, and corporate and general aviation?
Q8 = How important is it to have the Port bring about economic development - specifically manufacturing jobs - in the rural areas of Thurston County?

When respondent were asked how familiar they are with the role of the Port of Olympia, nine percent provided a score of five indicating they were very aware of the role of the Port. A total of 24 percent of the respondents gave a score of four or above in their perceived understanding of the Port’s role in the Thurston County. The mode was three or 28 percent.

Those polled were then asked, for the second question, how important it was for them to see the Port increase its shipping business. A total of 35 percent of the respondents indicated a strong preference resulting in a score of five for the mode for this question.

The third question dealt with how important is it that the Port focus resources on environmental issues and 52 percent of the responses gave a response of five making this the mode. Only six percent of those polled felt that this should be a low priority for the port.

When citizens were asked how important it was for the Port to expand recreational boating opportunities, again we see the mode was a score of five with 29 percent very much in favor of this activity. A total of 49 percent provided a score of four or five for a preference for expansion of recreational boating activities. Only nine percent felt it should not really be a priority.

The fifth question dealt with preference for the Port focusing on dredging efforts for its marine operations. Again, we see the largest number of responses, or 32 percent, was for a score of five or the highest preference. Five was also the mode for this question. A combined total of

57 percent provided a score of four or five while only eight percent provided a score of one or assigned the lowest preference for this activity.

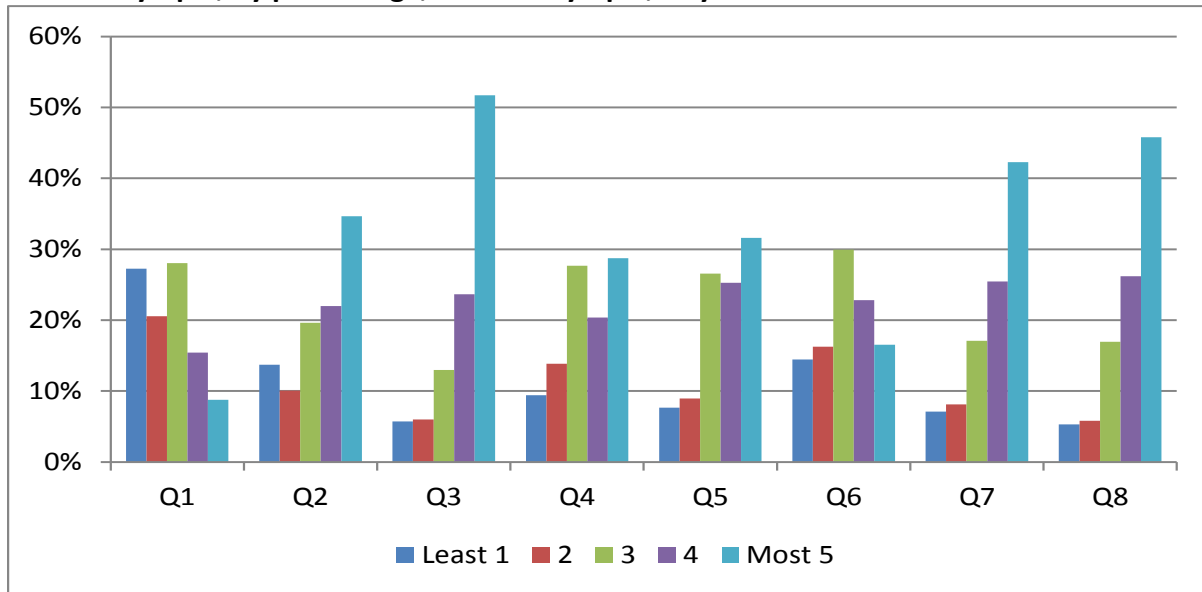
The question of whether the Port should add a fuel dock generated a response of 40 percent of those surveyed providing a score of four or five. The mode was three with 30 percent of the responses. Only 14 percent of those surveyed provided a score of one indicating the lowest preference.

The seventh question pertained to support of activities associated with the Port's airport. This question also resulted in the highest rating of support with 42 percent of those responding giving a score of five. The combination of those giving either a four or five score was 67 percent of those polled. Only 7 percent provided the lowest ranking.

The eight question regarded preference for the Port focusing on economic development and manufacturing jobs in rural Thurston County. This also generated overwhelming support with 46 percent giving a score of five making it also the mode for this question. When those that provided a score of four or five were combined, a total of 76 percent of those surveyed were very much in support of this activity. Only five percent gave this question a one for a response.

When the first eight questions are compared side-by-side in Figure 2 below, we see that questions two, three, four, five, seven and eight all had modes of five, or had the largest number of responses for highest category of support. Questions three, seven and eight all showed a strong skewing towards strong support from Thurston County citizens. Question one, or understanding of the role of the Port was the only one that was skewed more towards the lower end of the scale.

Figure 2. Responses to survey questions regarding understand of the role and policies of the Port of Olympia, by percentage, Port of Olympia, July 2012.



Citizens were also asked what types of development they would most like to see on Port property in downtown Olympia. Table 2 below summaries the results for those responding to the survey.

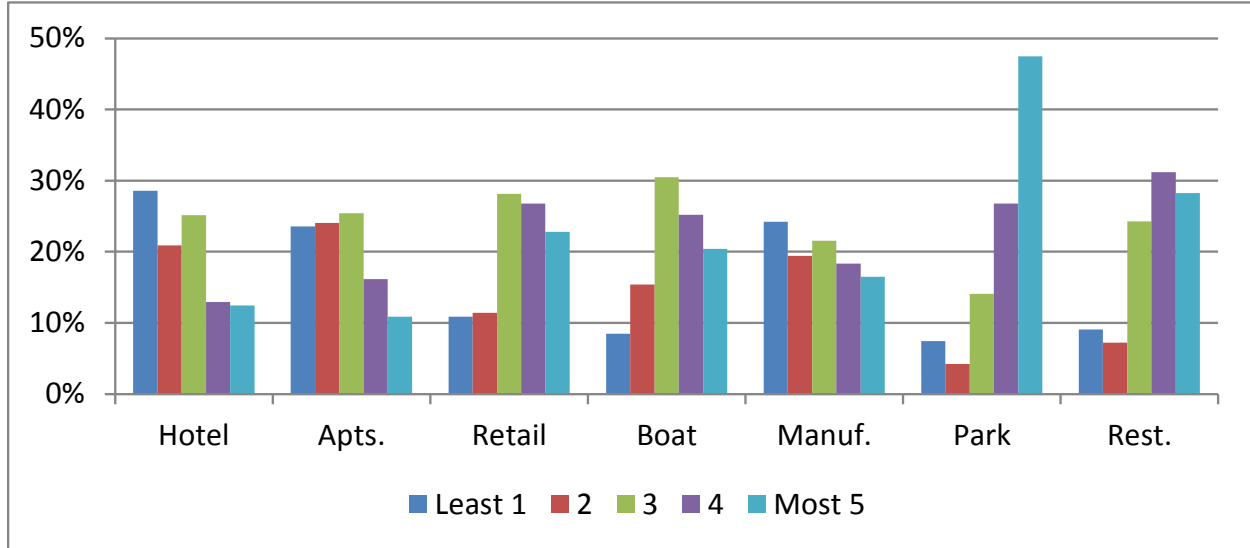
Table 2. Preferences for types of development for Port property in downtown Olympia, comparisons by number of responses and percentages, Port of Olympia, July 2012.

Scale	---Hotel---		----Apts.----		----Retail----		--Boating----		---Manuf.---		----Park----		---Rest.----	
	#	%	#	%	#	%	#	%	#	%	#	%	#	%
Least 1	108	29%	89	24%	41	11%	32	8%	91	24%	28	7%	34	9%
2	79	21%	91	24%	43	11%	58	15%	73	19%	16	4%	27	7%
3	95	25%	96	25%	106	28%	115	31%	81	22%	53	14%	91	24%
4	49	13%	61	16%	101	27%	95	25%	69	18%	101	27%	117	31%
Most 5	47	12%	41	11%	86	23%	77	20%	62	16%	179	47%	106	28%
Sum	378	100%	378	100%	377	100%	377	100%	376	100%	377	100%	375	100%
Mode	3		3		3		3		1		5		4	

Of the development options for Port property in downtown Olympia, the park option was the only one that received a mode of five with 47 percent of those responding stating that as their preferred choice. The only choice that had a mode of one was for pursuing manufacturing. The options of hotel, apartments, and boating facilities had modes of three. Restaurants and cafes were second in popularity behind the park preference with a mode of four.

Figure 3 below shows the developments options, in bar chart form, to better identify the trends discussed above.

Figure 3. Preferences for types of development for Port property in downtown Olympia, comparisons by number of responses and percentages, Port of Olympia, July 2012.



Respondents were also asked about how they obtained information about the Port of Olympia. Table 3 below show their responses in actual numbers and on a percentage basis.

Table 3. Ranking of top three methods of learning about the Port of Olympia (1=top choice), by number of responses and percentage, Port of Olympia, July 2012.

Source of Information	-----Number-----			-----Percent-----		
	1st	2nd	3rd	1st	2nd	3rd
Port of Olympia website	33	19	13	9%	7%	6%
Port open houses	2	12	6	1%	4%	3%
Port commission meetings	7	2	4	2%	1%	2%
TCTV	16	36	8	5%	13%	4%
Email	6	13	13	2%	5%	6%
Olympian - print	140	44	23	40%	16%	10%
Olympian - web	19	29	14	5%	11%	6%
Other paper	1	3	2	0%	1%	1%
Radio	24	29	29	7%	11%	13%
Community meeting	1	4	5	0%	1%	2%
U.S. mail	9	13	17	3%	5%	8%
Facebook/twitter	5	10	14	1%	4%	6%
Word of mouth	40	30	39	11%	11%	18%
Internet/blogs	19	21	14	5%	8%	6%
Other*						
Work related	4	2	3	1%	1%	1%
Observation/visits	19	5	16	5%	2%	7%
Misc. publications	3	3	2	1%	1%	1%
Phone survey	2	0	1	1%	0%	0%
Total	350	275	223	100%	100%	100%

The Olympian, in print form, was the first and second choices for learning about the Port. This was followed by word of mouth as the third choice. The Olympian being the main source of information was similar to the findings for the 2010 study.

When respondents were asked how they would like to be notified, on a scale of one to five, with five being the most preferred method, the Olympian (again printed version) along with the Port’s website both had modes of five. There were a limited number of responses in the “other” category which included additional suggestions footnoted under table 4 below.

Table 4. Methods preferred for learning more about the Port, by actual responses and percentage, Port of Olympia, July 2012.

Source of Information	-----Least 1-----		-----2-----		-----3-----		-----4-----		-----Most 5-----		-----Total-----		Mode
Port of Olympia website	86	23%	30	8%	46	12%	54	15%	156	42%	373	100%	5
Port open houses	129	35%	81	22%	87	23%	44	12%	31	8%	373	100%	1
Port commission meetings	178	48%	79	21%	66	18%	28	8%	20	5%	372	100%	1
TCTV	136	36%	61	16%	78	21%	51	14%	47	13%	374	100%	1
Email	137	37%	56	15%	57	15%	61	16%	60	16%	372	100%	1
Olympian - print	68	18%	27	7%	65	17%	73	20%	139	37%	373	100%	5
Olympian - web	101	27%	31	8%	68	18%	70	19%	100	27%	371	100%	1,5
Other paper	217	60%	37	10%	42	12%	36	10%	32	9%	365	100%	1
Radio	119	32%	45	12%	82	22%	56	15%	71	19%	374	100%	1
Community meeting	148	40%	70	19%	82	22%	40	11%	29	8%	370	100%	1
U.S. mail	115	31%	54	15%	76	21%	68	18%	57	15%	371	100%	1
Facebook/twitter	210	57%	40	11%	39	11%	39	11%	41	11%	370	100%	1
Other*	1	14%	0	0%	2	29%	0	0%	4	57%	7	100%	5

* You tube, Thurston Chamber, door-to-door

Conclusions

Overall, respondents appear to show strong support for marine and airport operations. Also, the consensus for the Port being a good environmental steward was also evident in responses to the question regarding the Port addressing resources towards environmental issues. Further there was strong support of the Port supporting economic development and job creation for the rural sector of Thurston County. It is interesting to note however that 27 percent of those contacted knew little about the Port and only 9 percent indicated a strong understanding of the Port and its role in the community. Thus there appears to be a lack of understanding of the role of the Port in Thurston County.

Of those that were aware of the Port activities, it still appears that the print form of the Olympian is the main source of information along with word of mouth. There were a large number of respondents that indicated that the Port website would be their preferred source for Port activities and events.

Of the development options for Port property in downtown Olympia, the park option was the one that received the strongest support with 47 percent of those responding stating it as their preferred choice. The only development choice that had little support was for pursuing manufacturing. The options of hotel, apartments, and boating facilities had modes of three. Restaurants and cafes were second in popularity behind the park preference.

As noted, this report provides only a review of the “topline” results. Using the attached cross-tabulations, greater detail in the analysis is available to explore the relationships between the demographics and the responses to selected questions. This will help with developing a strategic plan to better reach and engage the various community stakeholders about the Port of Olympia’s activities, as it continues to play a vital role in the economic development of Thurston County.

APPENDICES

Questionnaire and Cross-Tabulations

Table A1. Cross tabulations for question 1: Familiarly with the Port of Olympia, by count and percent of column and row totals, Port of Olympia Citizen Perception Survey, July 2012. (1=least & 5=most)

	-----Count-----						Mode	-----% of Column Total-----						-----% of Row Total-----					
	1	2	3	4	5	Total		1	2	3	4	5	Total	1	2	3	4	5	Total
Male	39	26	54	35	21	175	3	39%	34%	51%	58%	62%	47%	22%	15%	31%	20%	12%	100%
Under 35 yrs	13	5	6	6	4	34	1	13%	7%	6%	10%	12%	9%	38%	15%	18%	18%	12%	100%
Lacey	4		3	3	1	11	1	4%	0%	3%	5%	3%	3%	36%	0%	27%	27%	9%	100%
Olympia	4	3	3	2	1	13	1	4%	4%	3%	3%	3%	3%	31%	23%	23%	15%	8%	100%
Tumwater	1					1	1	1%	0%	0%	0%	0%	0%	100%	0%	0%	0%	0%	100%
Rest of Thurston	4	2		1	2	9	1	4%	3%	0%	2%	6%	2%	44%	22%	0%	11%	22%	100%
36-50 yrs	8	5	14	9	6	42	3	8%	7%	13%	15%	18%	11%	19%	12%	33%	21%	14%	100%
Lacey	1	2	1	1	3	8	5	1%	3%	1%	2%	9%	2%	13%	25%	13%	13%	38%	100%
Olympia	1	2	4	3	2	12	3	1%	3%	4%	5%	6%	3%	8%	17%	33%	25%	17%	100%
Tumwater	1	1	2	1		5	3	1%	1%	2%	2%	0%	1%	20%	20%	40%	20%	0%	100%
Rest of Thurston	5		7	4	1	17	3	5%	0%	7%	7%	3%	5%	29%	0%	41%	24%	6%	100%
51-65 yrs	9	8	16	10	4	47	3	9%	11%	15%	17%	12%	13%	19%	17%	34%	21%	9%	100%
Lacey		1	3	2		6	3	0%	1%	3%	3%	0%	2%	0%	17%	50%	33%	0%	100%
Olympia	3	1	6	5	2	17	3	3%	1%	6%	8%	6%	5%	18%	6%	35%	29%	12%	100%
Tumwater		1	1	2		4	4	0%	1%	1%	3%	0%	1%	0%	25%	25%	50%	0%	100%
Rest of Thurston	6	5	6	1	2	20	1,3	6%	7%	6%	2%	6%	5%	30%	25%	30%	5%	10%	100%
Over 65 yrs	9	8	18	10	7	52	3	9%	11%	17%	17%	21%	14%	17%	15%	35%	19%	13%	100%
Lacey	2	2	4	2	1	11	3	2%	3%	4%	3%	3%	3%	18%	18%	36%	18%	9%	100%
Olympia	2	2	10	3	5	22	3	2%	3%	10%	5%	15%	6%	9%	9%	45%	14%	23%	100%
Tumwater	2		2	1		5	1,3	2%	0%	2%	2%	0%	1%	40%	0%	40%	20%	0%	100%
Rest of Thurston	3	4	2	4	1	14	2,4	3%	5%	2%	7%	3%	4%	21%	29%	14%	29%	7%	100%
Female	61	50	51	25	13	200	1	61%	66%	49%	42%	38%	53%	31%	25%	26%	13%	7%	100%
Under 35 yrs	12	7	11	3	4	37	1	12%	9%	10%	5%	12%	10%	32%	19%	30%	8%	11%	100%
Lacey	3	4		2	2	11	2	3%	5%	0%	3%	6%	3%	27%	36%	0%	18%	18%	100%
Olympia	3	2	7		2	14	3	3%	3%	7%	0%	6%	4%	21%	14%	50%	0%	14%	100%
Tumwater	3		2			5	1	3%	0%	2%	0%	0%	1%	60%	0%	40%	0%	0%	100%
Rest of Thurston	3	1	2	1		7	1	3%	1%	2%	2%	0%	2%	43%	14%	29%	14%	0%	100%
36-50 yrs	15	14	12	7	4	52	1	15%	18%	11%	12%	12%	14%	29%	27%	23%	13%	8%	100%
Lacey	4	4		1	1	10	1,2	4%	5%	0%	2%	3%	3%	40%	40%	0%	10%	10%	100%
Olympia	4	3	8	2	1	18	3	4%	4%	8%	3%	3%	5%	22%	17%	44%	11%	6%	100%
Tumwater	2	1		1	1	5	1	2%	1%	0%	2%	3%	1%	40%	20%	0%	20%	20%	100%
Rest of Thurston	5	6	4	3	1	19	2	5%	8%	4%	5%	3%	5%	26%	32%	21%	16%	5%	100%
51-65 yrs	16	13	17	10	3	59	3	16%	17%	16%	17%	9%	16%	27%	22%	29%	17%	5%	100%
Lacey	1	5	2	1	1	10	2	1%	7%	2%	2%	3%	3%	10%	50%	20%	10%	10%	100%
Olympia	8	5	4	5		22	1	8%	7%	4%	8%	0%	6%	36%	23%	18%	23%	0%	100%
Tumwater	1	1	2			4	3	1%	1%	2%	0%	0%	1%	25%	25%	50%	0%	0%	100%
Rest of Thurston	6	2	9	4	2	23	3	6%	3%	9%	7%	6%	6%	26%	9%	39%	17%	9%	100%
Over 65 yrs	18	16	11	5	2	52	1	18%	21%	10%	8%	6%	14%	35%	31%	21%	10%	4%	100%
Lacey	3	2	2	1		8	1	3%	3%	2%	2%	0%	2%	38%	25%	25%	13%	0%	100%
Olympia	7	7	6	2	2	24	1,2	7%	9%	6%	3%	6%	6%	29%	29%	25%	8%	8%	100%
Tumwater		4				4	2	0%	5%	0%	0%	0%	1%	0%	100%	0%	0%	0%	100%
Rest of Thurston	8	3	3	2		16	1	8%	4%	3%	3%	0%	4%	50%	19%	19%	13%	0%	100%
Total	100	76	105	60	34	375	3	100%	100%	100%	100%	100%	100%	27%	20%	28%	16%	9%	100%

Table A2. Cross tabulations for question 2: Importance of the Port increasing its shipping business, by count and percent of column and row totals, Port of Olympia Citizen Perception Survey, July 2012. (1=least & 5=most)

	-----Count-----						Mode	-----% of Column Total-----						-----% of Row Total-----					
	<u>1</u>	<u>2</u>	<u>3</u>	<u>4</u>	<u>5</u>	Total		<u>1</u>	<u>2</u>	<u>3</u>	<u>4</u>	<u>5</u>	Total	<u>1</u>	<u>2</u>	<u>3</u>	<u>4</u>	<u>5</u>	Total
Male	23	13	33	44	62	175	5	48%	35%	44%	53%	47%	47%	13%	7%	19%	25%	35%	100%
Under 35 yrs	4	3	9	9	9	34	3,4,5	8%	8%	12%	11%	7%	9%	12%	9%	26%	26%	26%	100%
Lacey	2		1	5	3	11	4	4%	0%	1%	6%	2%	3%	18%	0%	9%	45%	27%	100%
Olympia	1	2	4	3	3	13	3	2%	5%	5%	4%	2%	3%	8%	15%	31%	23%	23%	100%
Tumwater					1	1	5	0%	0%	0%	0%	1%	0%	0%	0%	0%	0%	100%	100%
Rest of Thurston	1	1	4	1	2	9	3	2%	3%	5%	1%	2%	2%	11%	11%	44%	11%	22%	100%
36-50 yrs	6	4	3	12	17	42	5	13%	11%	4%	14%	13%	11%	14%	10%	7%	29%	40%	100%
Lacey				4	4	8	4,5	0%	0%	0%	5%	3%	2%	0%	0%	0%	50%	50%	100%
Olympia	3		2	3	4	12	5	6%	0%	3%	4%	3%	3%	25%	0%	17%	25%	33%	100%
Tumwater		2		1	2	5	3,5	0%	5%	0%	1%	2%	1%	0%	40%	0%	20%	40%	100%
Rest of Thurston	3	2	1	4	7	17	5	6%	5%	1%	5%	5%	5%	18%	12%	6%	24%	41%	100%
51-65 yrs	7	6	10	7	17	47	5	15%	16%	13%	8%	13%	13%	15%	13%	21%	15%	36%	100%
Lacey		1	1	1	3	6	5	0%	3%	1%	1%	2%	2%	0%	17%	17%	17%	50%	100%
Olympia	4	1	1	2	9	17	5	8%	3%	1%	2%	7%	5%	24%	6%	6%	12%	53%	100%
Tumwater		1		1	2	4	5	0%	3%	0%	1%	2%	1%	0%	25%	0%	25%	50%	100%
Rest of Thurston	3	3	8	3	3	20	3	6%	8%	11%	4%	2%	5%	15%	15%	40%	15%	15%	100%
Over 65 yrs	6		11	16	19	52	5	13%	0%	15%	19%	14%	14%	12%	0%	21%	31%	37%	100%
Lacey	2		2	3	4	11	5	4%	0%	3%	4%	3%	3%	18%	0%	18%	27%	36%	100%
Olympia	2		4	6	10	22	5	4%	0%	5%	7%	8%	6%	9%	0%	18%	27%	45%	100%
Tumwater	1		1	1	2	5	5	2%	0%	1%	1%	2%	1%	20%	0%	20%	20%	40%	100%
Rest of Thurston	1		4	6	3	14	4	2%	0%	5%	7%	2%	4%	7%	0%	29%	43%	21%	100%
Female	25	24	42	39	70	200	5	52%	65%	56%	47%	53%	53%	13%	12%	21%	20%	35%	100%
Under 35 yrs	5	7	8	6	11	37	5	10%	19%	11%	7%	8%	10%	14%	19%	22%	16%	30%	100%
Lacey	2	3	2		4	11	5	4%	8%	3%	0%	3%	3%	18%	27%	18%	0%	36%	100%
Olympia	3	2	5		4	14	5	6%	5%	7%	0%	3%	4%	21%	14%	36%	0%	29%	100%
Tumwater		2		1	2	5	3,5	0%	5%	0%	1%	2%	1%	0%	40%	0%	20%	40%	100%
Rest of Thurston			1	5	1	7	4	0%	0%	1%	6%	1%	2%	0%	0%	14%	71%	14%	100%
36-50 yrs	3	6	12	15	16	52	5	6%	16%	16%	18%	12%	14%	6%	12%	23%	29%	31%	100%
Lacey			1	5	4	10	4	0%	0%	1%	6%	3%	3%	0%	0%	10%	50%	40%	100%
Olympia		2	4	6	6	18	4,5	0%	5%	5%	7%	5%	5%	0%	11%	22%	33%	33%	100%
Tumwater			2	1	2	5	3,5	0%	0%	3%	1%	2%	1%	0%	0%	40%	20%	40%	100%
Rest of Thurston	3	4	5	3	4	19	3	6%	11%	7%	4%	3%	5%	16%	21%	26%	16%	21%	100%
51-65 yrs	11	7	9	10	22	59	5	23%	19%	12%	12%	17%	16%	19%	12%	15%	17%	37%	100%
Lacey		2	2	3	3	10	4,5	0%	5%	3%	4%	2%	3%	0%	20%	20%	30%	30%	100%
Olympia	7	3	2	2	8	22	5	15%	8%	3%	2%	6%	6%	32%	14%	9%	9%	36%	100%
Tumwater				1	3	4	5	0%	0%	0%	1%	2%	1%	0%	0%	0%	25%	75%	100%
Rest of Thurston	4	2	5	4	8	23	5	8%	5%	7%	5%	6%	6%	17%	9%	22%	17%	35%	100%
Over 65 yrs	6	4	13	8	21	52	5	13%	11%	17%	10%	16%	14%	12%	8%	25%	15%	40%	100%
Lacey			3	1	4	8	5	0%	0%	4%	1%	3%	2%	0%	0%	38%	13%	50%	100%
Olympia	3	2	6	3	10	24	5	6%	5%	8%	4%	8%	6%	13%	8%	25%	13%	42%	100%
Tumwater		1	1		2	4	5	0%	3%	1%	0%	2%	1%	0%	25%	25%	0%	50%	100%
Rest of Thurston	3	1	3	4	5	16	5	6%	3%	4%	5%	4%	4%	19%	6%	19%	25%	31%	100%
Total	48	37	75	83	132	375	5	100%	100%	100%	100%	100%	100%	13%	10%	20%	22%	35%	100%

Table A3. Cross tabulations for question 3: Importance of the Port committing resources towards any environmental issues on Port-owned property, by count and percent of column and row totals, Port of Olympia Citizen Perception Survey, July 2012. (1=least & 5=most)

	-----Count-----						Mode	-----% of Column Total-----						-----% of Row Total-----					
	<u>1</u>	<u>2</u>	<u>3</u>	<u>4</u>	<u>5</u>	Total		<u>1</u>	<u>2</u>	<u>3</u>	<u>4</u>	<u>5</u>	Total	<u>1</u>	<u>2</u>	<u>3</u>	<u>4</u>	<u>5</u>	Total
Male	16	15	31	34	79	175	5	73%	71%	66%	39%	40%	47%	9%	9%	18%	19%	45%	100%
Under 35 yrs	4	1	9	8	12	34	5	18%	5%	19%	9%	6%	9%	12%	3%	26%	24%	35%	100%
Lacey	1	1	1	4	4	11	4,5	5%	5%	2%	5%	2%	3%	9%	9%	9%	36%	36%	100%
Olympia	2		4	4	3	13	4,5	9%	0%	9%	5%	2%	3%	15%	0%	31%	31%	23%	100%
Tumwater					1	1	5	0%	0%	0%	0%	1%	0%	0%	0%	0%	0%	100%	100%
Rest of Thurston	1		4		4	9	3,5	5%	0%	9%	0%	2%	2%	11%	0%	44%	0%	44%	100%
36-50 yrs	3	5	4	9	21	42	5	14%	24%	9%	10%	11%	11%	7%	12%	10%	21%	50%	100%
Lacey				3	5	8	5	0%	0%	0%	3%	3%	2%	0%	0%	0%	38%	63%	100%
Olympia		1	2	2	7	12	5	0%	5%	4%	2%	4%	3%	0%	8%	17%	17%	58%	100%
Tumwater		2	1		2	5	2,5	0%	10%	2%	0%	1%	1%	0%	40%	20%	0%	40%	100%
Rest of Thurston	3	2	1	4	7	17	5	14%	10%	2%	5%	4%	5%	18%	12%	6%	24%	41%	100%
51-65 yrs	3	7	7	10	20	47	5	14%	33%	15%	11%	10%	13%	6%	15%	15%	21%	43%	100%
Lacey		1	2	3		6	4	0%	5%	4%	3%	0%	2%	0%	17%	33%	50%	0%	100%
Olympia		3	4	1	9	17	5	0%	14%	9%	1%	5%	5%	0%	18%	24%	6%	53%	100%
Tumwater				1	3	4	5	0%	0%	0%	1%	2%	1%	0%	0%	0%	25%	75%	100%
Rest of Thurston	3	3	1	5	8	20	5	14%	14%	2%	6%	4%	5%	15%	15%	5%	25%	40%	100%
Over 65 yrs	6	2	11	7	26	52	5	27%	10%	23%	8%	13%	14%	12%	4%	21%	13%	50%	100%
Lacey	3		2	3	3	11	1,4,5	14%	0%	4%	3%	2%	3%	27%	0%	18%	27%	27%	100%
Olympia	2	2	3	2	13	22	5	9%	10%	6%	2%	7%	6%	9%	9%	14%	9%	59%	100%
Tumwater			1	1	3	5	5	0%	0%	2%	1%	2%	1%	0%	0%	20%	20%	60%	100%
Rest of Thurston	1		5	1	7	14	5	5%	0%	11%	1%	4%	4%	7%	0%	36%	7%	50%	100%
Female	6	6	16	54	118	200	5	27%	29%	34%	61%	60%	53%	3%	3%	8%	27%	59%	100%
Under 35 yrs	2	1	3	10	21	37	5	9%	5%	6%	11%	11%	10%	5%	3%	8%	27%	57%	100%
Lacey	1	1	1	3	5	11	5	5%	5%	2%	3%	3%	3%	9%	9%	9%	27%	45%	100%
Olympia	1		2	4	7	14	5	5%	0%	4%	5%	4%	4%	7%	0%	14%	29%	50%	100%
Tumwater					5	5	5	0%	0%	0%	0%	3%	1%	0%	0%	0%	0%	100%	100%
Rest of Thurston				3	4	7	5	0%	0%	0%	3%	2%	2%	0%	0%	0%	43%	57%	100%
36-50 yrs	2	1	5	17	27	52	5	9%	5%	11%	19%	14%	14%	4%	2%	10%	33%	52%	100%
Lacey			1	3	6	10	5	0%	0%	2%	3%	3%	3%	0%	0%	10%	30%	60%	100%
Olympia	1	1	2	7	7	18	4,5	5%	5%	4%	8%	4%	5%	6%	6%	11%	39%	39%	100%
Tumwater	1			1	3	5	5	5%	0%	0%	1%	2%	1%	20%	0%	0%	20%	60%	100%
Rest of Thurston			2	6	11	19	5	0%	0%	4%	7%	6%	5%	0%	0%	11%	32%	58%	100%
51-65 yrs	1	3	16	39	59	59	5	5%	0%	6%	18%	20%	16%	2%	0%	5%	27%	66%	100%
Lacey	1			3	6	10	5	5%	0%	0%	3%	3%	3%	10%	0%	0%	30%	60%	100%
Olympia			2	6	14	22	5	0%	0%	4%	7%	7%	6%	0%	0%	9%	27%	64%	100%
Tumwater			1	1	2	4	5	0%	0%	2%	1%	1%	1%	0%	0%	25%	25%	50%	100%
Rest of Thurston				6	17	23	5	0%	0%	0%	7%	9%	6%	0%	0%	0%	26%	74%	100%
Over 65 yrs	1	4	5	11	31	52	5	5%	19%	11%	13%	16%	14%	2%	8%	10%	21%	60%	100%
Lacey	1			1	6	8	5	5%	0%	0%	1%	3%	2%	13%	0%	0%	13%	75%	100%
Olympia		2	1	7	14	24	5	0%	10%	2%	8%	7%	6%	0%	8%	4%	29%	58%	100%
Tumwater			1	2	1	4	4	0%	0%	2%	2%	1%	1%	0%	0%	25%	50%	25%	100%
Rest of Thurston		2	3	1	10	16	5	0%	10%	6%	1%	5%	4%	0%	13%	19%	6%	63%	100%
Total	22	21	47	88	197	375	5	100%	100%	100%	100%	100%	100%	6%	6%	13%	23%	53%	100%

Table A4. Cross tabulations for question 4: Importance of the Port expanding opportunities for recreational boating in Budd Inlet and Thurston County water, by count and percent of column and row totals, Port of Olympia Citizen Perception Survey, July 2012. (1=least & 5=most)

	-----Count-----						Mode	-----% of Column Total-----						-----% of Row Total-----					
	1	2	3	4	5	Total		1	2	3	4	5	Total	1	2	3	4	5	Total
Male	20	23	52	37	43	175	3	56%	47%	50%	49%	40%	47%	11%	13%	30%	21%	25%	100%
Under 35 yrs	5	4	11	6	8	34	3	14%	8%	10%	8%	7%	9%	15%	12%	32%	18%	24%	100%
Lacey		3	2	4	2	11	4	0%	6%	2%	5%	2%	3%	0%	27%	18%	36%	18%	100%
Olympia	4	1	5	1	2	13	3	11%	2%	5%	1%	2%	3%	31%	8%	38%	8%	15%	100%
Tumwater			1			1	3	0%	0%	1%	0%	0%	0%	0%	0%	100%	0%	0%	100%
Rest of Thurston	1		3	1	4	9	5	3%	0%	3%	1%	4%	2%	11%	0%	33%	11%	44%	100%
36-50 yrs	7	6	8	9	12	42	5	19%	12%	8%	12%	11%	11%	17%	14%	19%	21%	29%	100%
Lacey		3	1		4	8	5	0%	6%	1%	0%	4%	2%	0%	38%	13%	0%	50%	100%
Olympia	2		2	5	3	12	4	6%	0%	2%	7%	3%	3%	17%	0%	17%	42%	25%	100%
Tumwater	1		2	1	1	5	3	3%	0%	2%	1%	1%	1%	20%	0%	40%	20%	20%	100%
Rest of Thurston	4	3	3	3	4	17	1,5	11%	6%	3%	4%	4%	5%	24%	18%	18%	18%	24%	100%
51-65 yrs	3	6	17	12	9	47	3	8%	12%	16%	16%	8%	13%	6%	13%	36%	26%	19%	100%
Lacey		1	3	1	1	6	3	0%	2%	3%	1%	1%	2%	0%	17%	50%	17%	17%	100%
Olympia	1	1	5	5	5	17	3,4,5	3%	2%	5%	7%	5%	5%	6%	6%	29%	29%	29%	100%
Tumwater			1	2	1	4	4	0%	0%	1%	3%	1%	1%	0%	0%	25%	50%	25%	100%
Rest of Thurston	2	4	8	4	2	20	3	6%	8%	8%	5%	2%	5%	10%	20%	40%	20%	10%	100%
Over 65 yrs	5	7	16	10	14	52	3	14%	14%	15%	13%	13%	14%	10%	13%	31%	19%	27%	100%
Lacey	1		3	1	6	11	5	3%	0%	3%	1%	6%	3%	9%	0%	27%	9%	55%	100%
Olympia		4	8	4	6	22	3	0%	8%	8%	5%	6%	6%	0%	18%	36%	18%	27%	100%
Tumwater	2	2	1			5	1,2	6%	4%	1%	0%	0%	1%	40%	40%	20%	0%	0%	100%
Rest of Thurston	2	1	4	5	2	14	4	6%	2%	4%	7%	2%	4%	14%	7%	29%	36%	14%	100%
Female	16	26	53	39	65	199	5	44%	53%	50%	51%	60%	53%	8%	13%	27%	20%	33%	100%
Under 35 yrs	4	5	12	7	9	37	3	11%	10%	11%	9%	8%	10%	11%	14%	32%	19%	24%	100%
Lacey	2	2	3	1	3	11	3,5	6%	4%	3%	1%	3%	3%	18%	18%	27%	9%	27%	100%
Olympia	1	3	6	3	1	14	3	3%	6%	6%	4%	1%	4%	7%	21%	43%	21%	7%	100%
Tumwater	1		2	1	1	5	3	3%	0%	2%	1%	1%	1%	20%	0%	40%	20%	20%	100%
Rest of Thurston			1	2	4	7	5	0%	0%	1%	3%	4%	2%	0%	0%	14%	29%	57%	100%
36-50 yrs	3	11	13	8	17	52	5	8%	22%	12%	11%	16%	14%	6%	21%	25%	15%	33%	100%
Lacey		2	2	3	3	10	4,5	0%	4%	2%	4%	3%	3%	0%	20%	20%	30%	30%	100%
Olympia		5	5	1	7	18	5	0%	10%	5%	1%	6%	5%	0%	28%	28%	6%	39%	100%
Tumwater		1	1		3	5	5	0%	2%	1%	0%	3%	1%	0%	20%	20%	0%	60%	100%
Rest of Thurston	3	3	5	4	4	19	3	8%	6%	5%	5%	4%	5%	16%	16%	26%	21%	21%	100%
51-65 yrs	3	8	15	12	21	59	5	8%	16%	14%	16%	19%	16%	5%	14%	25%	20%	36%	100%
Lacey		2	3	2	3	10	3,5	0%	4%	3%	3%	3%	3%	0%	20%	30%	20%	30%	100%
Olympia	1	3	6	5	7	22	5	3%	6%	6%	7%	6%	6%	5%	14%	27%	23%	32%	100%
Tumwater				2	2	4	4,5	0%	0%	0%	3%	2%	1%	0%	0%	0%	50%	50%	100%
Rest of Thurston	2	3	6	3	9	23	5	6%	6%	6%	4%	8%	6%	9%	13%	26%	13%	39%	100%
Over 65 yrs	6	2	13	12	18	51	5	17%	4%	12%	16%	17%	14%	12%	4%	25%	24%	35%	100%
Lacey	3			1	3	7	1,5	8%	0%	0%	1%	3%	2%	43%	0%	0%	14%	43%	100%
Olympia	2	1	6	6	9	24	5	6%	2%	6%	8%	8%	6%	8%	4%	25%	25%	38%	100%
Tumwater			4			4	3	0%	0%	4%	0%	0%	1%	0%	0%	100%	0%	0%	100%
Rest of Thurston	1	1	3	5	6	16	5	3%	2%	3%	7%	6%	4%	6%	6%	19%	31%	38%	100%
Total	36	49	105	76	108	374	5	100%	100%	100%	100%	100%	100%	10%	13%	28%	20%	29%	100%

Table A5. Cross tabulations for question 5: Supportive of the Port using public dollars to dredge Budd Inlet, by count and percent of column and row totals, Port of Olympia Citizen Perception Survey, July 2012. (1=least & 5=most)

	-----Count-----						Mode	-----% of Column Total-----						-----% of Row Total-----						
	<u>1</u>	<u>2</u>	<u>3</u>	<u>4</u>	<u>5</u>	Total		<u>1</u>	<u>2</u>	<u>3</u>	<u>4</u>	<u>5</u>	Total	<u>1</u>	<u>2</u>	<u>3</u>	<u>4</u>	<u>5</u>	Total	
Male	15	16	52	35	56	174	5	54%	50%	53%	37%	47%	47%	9%	12%	12%	38%	18%	21%	100%
Under 35 yrs	4	4	13	6	7	34	3	14%	13%	13%	6%	6%	9%	12%	12%	38%	18%	21%	100%	
Lacey		1	4	2	4	11	3,5	0%	3%	4%	2%	3%	3%	0%	9%	36%	18%	36%	100%	
Olympia	2	2	5	3	1	13	3	7%	6%	5%	3%	1%	4%	15%	15%	38%	23%	8%	100%	
Tumwater			1			1	3	0%	0%	1%	0%	0%	0%	0%	0%	100%	0%	0%	100%	
Rest of Thurston	2	1	3	1	2	9	3	7%	3%	3%	1%	2%	2%	22%	11%	33%	11%	22%	100%	
36-50 yrs	3	4	14	8	12	41	3	11%	13%	14%	9%	10%	11%	7%	10%	34%	20%	29%	100%	
Lacey			3	2	3	8	3,5	0%	0%	3%	2%	3%	2%	0%	0%	38%	25%	38%	100%	
Olympia	1	2	3	1	5	12	5	4%	6%	3%	1%	4%	3%	8%	17%	25%	8%	42%	100%	
Tumwater			4	1		5	3	0%	0%	4%	1%	0%	1%	0%	0%	80%	20%	0%	100%	
Rest of Thurston	2	2	4	4	4	16	3,4,5	7%	6%	4%	4%	3%	4%	13%	13%	25%	25%	25%	100%	
51-65 yrs	6	3	14	10	14	47	3,5	21%	9%	14%	11%	12%	13%	13%	6%	30%	21%	30%	100%	
Lacey			2	1	3	6	5	0%	0%	2%	1%	3%	2%	0%	0%	33%	17%	50%	100%	
Olympia	2	2	6	2	5	17	3	7%	6%	6%	2%	4%	5%	12%	12%	35%	12%	29%	100%	
Tumwater		1	2		1	4	3	0%	3%	2%	0%	1%	1%	0%	25%	50%	0%	25%	100%	
Rest of Thurston	4		4	7	5	20	4	14%	0%	4%	7%	4%	5%	20%	0%	20%	35%	25%	100%	
Over 65 yrs	2	5	11	11	23	52	5	7%	16%	11%	12%	19%	14%	4%	10%	21%	21%	44%	100%	
Lacey	1	1	1	2	6	11	5	4%	3%	1%	2%	5%	3%	9%	9%	9%	18%	55%	100%	
Olympia	1	2	3	5	11	22	5	4%	6%	3%	5%	9%	6%	5%	9%	14%	23%	50%	100%	
Tumwater		2		1	2	5	2,5	0%	6%	0%	1%	2%	1%	0%	40%	0%	20%	40%	100%	
Rest of Thurston			7	3	4	14	3	0%	0%	7%	3%	3%	4%	0%	0%	50%	21%	29%	100%	
Female	13	16	46	59	63	197	5	46%	50%	47%	63%	53%	53%	7%	8%	23%	30%	32%	100%	
Under 35 yrs	3	4	6	13	11	37	4	11%	13%	6%	14%	9%	10%	8%	11%	16%	35%	30%	100%	
Lacey	2	1	2	3	3	11	4,5	7%	3%	2%	3%	3%	3%	18%	9%	18%	27%	27%	100%	
Olympia	1	3	1	4	5	14	5	4%	9%	1%	4%	4%	4%	7%	21%	7%	29%	36%	100%	
Tumwater			1	2	2	5	4,5	0%	0%	1%	2%	2%	1%	0%	0%	20%	40%	40%	100%	
Rest of Thurston			2	4	1	7	4	0%	0%	2%	4%	1%	2%	0%	0%	29%	57%	14%	100%	
36-50 yrs	2	5	11	20	14	52	4	7%	16%	11%	21%	12%	14%	4%	10%	21%	38%	27%	100%	
Lacey			3	4	3	10	4	0%	0%	3%	4%	3%	3%	0%	0%	30%	40%	30%	100%	
Olympia	1	2	3	7	5	18	4	4%	6%	3%	7%	4%	5%	6%	11%	17%	39%	28%	100%	
Tumwater		2	1	1	1	5	2	0%	6%	1%	1%	1%	1%	0%	40%	20%	20%	20%	100%	
Rest of Thurston	1	1	4	8	5	19	4	4%	3%	4%	9%	4%	5%	5%	5%	21%	42%	26%	100%	
51-65 yrs	6	4	14	11	23	58	5	21%	13%	14%	12%	19%	16%	10%	7%	24%	19%	40%	100%	
Lacey			4	2	3	9	3	0%	0%	4%	2%	3%	2%	0%	0%	44%	22%	33%	100%	
Olympia	3	1	3	4	11	22	5	11%	3%	3%	4%	9%	6%	14%	5%	14%	18%	50%	100%	
Tumwater			2	1	1	4	3	0%	0%	2%	1%	1%	1%	0%	0%	50%	25%	25%	100%	
Rest of Thurston	3	3	5	4	8	23	5	11%	9%	5%	4%	7%	6%	13%	13%	22%	17%	35%	100%	
Over 65 yrs	2	3	15	15	15	50	3,4,5	7%	9%	15%	16%	13%	13%	4%	6%	30%	30%	30%	100%	
Lacey		1	2	1	3	7	5	0%	3%	2%	1%	3%	2%	0%	14%	29%	14%	43%	100%	
Olympia	1	2	7	8	6	24	4	4%	6%	7%	9%	5%	6%	4%	8%	29%	33%	25%	100%	
Tumwater			2	2		4	3,4	0%	0%	2%	2%	0%	1%	0%	0%	50%	50%	0%	100%	
Rest of Thurston	1		4	4	6	15	5	4%	0%	4%	4%	5%	4%	7%	0%	27%	27%	40%	100%	
Total	28	32	98	94	119	371	5	100%	100%	100%	100%	100%	100%	8%	9%	26%	25%	32%	100%	

Table A6. Cross tabulations for question 6: Importance of the Port adding a fuel dock for fuel sales to local boaters and to boaters who visit Thurston County, by count and percent of column and row totals, Port of Olympia Citizen Perception Survey, July 2012. (1=least & 5=most)

	-----Count-----						Mode	-----% of Column Total-----						-----% of Row Total-----					
	1	2	3	4	5	Total		1	2	3	4	5	Total	1	2	3	4	5	Total
Male	26	28	48	47	26	175	3	48%	45%	43%	55%	42%	47%	15%	16%	27%	27%	15%	100%
Under 35 yrs	7	5	7	9	6	34	4	13%	8%	6%	11%	10%	9%	21%	15%	21%	26%	18%	100%
Lacey	2		3	3	3	11	3,4,5	4%	0%	3%	4%	5%	3%	18%	0%	27%	27%	27%	100%
Olympia	3	4	2	3	1	13	2	6%	6%	2%	4%	2%	3%	23%	31%	15%	23%	8%	100%
Tumwater					1	1	5	0%	0%	0%	0%	2%	0%	0%	0%	0%	0%	100%	100%
Rest of Thurston	2	1	2	3	1	9	4	4%	2%	2%	4%	2%	2%	22%	11%	22%	33%	11%	100%
36-50 yrs	2	6	13	15	6	42	4	4%	10%	12%	18%	10%	11%	5%	14%	31%	36%	14%	100%
Lacey		2	2	3	1	8	4	0%	3%	2%	4%	2%	2%	0%	25%	25%	38%	13%	100%
Olympia		2	7	2	1	12	3	0%	3%	6%	2%	2%	3%	0%	17%	58%	17%	8%	100%
Tumwater			1	4		5	4	0%	0%	1%	5%	0%	1%	0%	0%	20%	80%	0%	100%
Rest of Thurston	2	2	3	6	4	17	4	4%	3%	3%	7%	6%	5%	12%	12%	18%	35%	24%	100%
51-65 yrs	10	9	14	11	3	47	3	19%	15%	13%	13%	5%	13%	21%	19%	30%	23%	6%	100%
Lacey		1	3	1	1	6	3	0%	2%	3%	1%	2%	2%	0%	17%	50%	17%	17%	100%
Olympia	6	4	4	3		17	1	11%	6%	4%	4%	0%	5%	35%	24%	24%	18%	0%	100%
Tumwater	1		1	1	1	4	1,3,4,5	2%	0%	1%	1%	2%	1%	25%	0%	25%	25%	25%	100%
Rest of Thurston	3	4	6	6	1	20	3,4	6%	6%	5%	7%	2%	5%	15%	20%	30%	30%	5%	100%
Over 65 yrs	7	8	14	12	11	52	3	13%	13%	13%	14%	18%	14%	13%	15%	27%	23%	21%	100%
Lacey	1	2	3	2	3	11	3,5	2%	3%	3%	2%	5%	3%	9%	18%	27%	18%	27%	100%
Olympia	2	4	6	5	5	22	3	4%	6%	5%	6%	8%	6%	9%	18%	27%	23%	23%	100%
Tumwater	2		1	1	1	5	1	4%	0%	1%	1%	2%	1%	40%	0%	20%	20%	20%	100%
Rest of Thurston	2	2	4	4	2	14	3,4	4%	3%	4%	5%	3%	4%	14%	14%	29%	29%	14%	100%
Female	28	34	63	38	36	199	3	52%	55%	57%	45%	58%	53%	14%	17%	32%	19%	18%	100%
Under 35 yrs	5	8	11	8	5	37	3	9%	13%	10%	9%	8%	10%	14%	22%	30%	22%	14%	100%
Lacey	1	3	3	1	3	11	2,3,5	2%	5%	3%	1%	5%	3%	9%	27%	27%	9%	27%	100%
Olympia	2	3	5	3	1	14	3	4%	5%	5%	4%	2%	4%	14%	21%	36%	21%	7%	100%
Tumwater	1	1	1	1	1	5	1,2,3,4,5	2%	2%	1%	1%	2%	1%	20%	20%	20%	20%	20%	100%
Rest of Thurston	1	1	2	3		7	4	2%	2%	2%	4%	0%	2%	14%	14%	29%	43%	0%	100%
36-50 yrs	4	10	18	13	7	52	3	7%	16%	16%	15%	11%	14%	8%	19%	35%	25%	13%	100%
Lacey		2	4	3	1	10	3	0%	3%	4%	4%	2%	3%	0%	20%	40%	30%	10%	100%
Olympia	3	2	3	7	3	18	4	6%	3%	3%	8%	5%	5%	17%	11%	17%	39%	17%	100%
Tumwater		2		1	2	5	2,5	0%	3%	0%	1%	3%	1%	0%	40%	0%	20%	40%	100%
Rest of Thurston	1	4	11	2	1	19	3	2%	6%	10%	2%	2%	5%	5%	21%	58%	11%	5%	100%
51-65 yrs	13	10	18	9	9	59	3	24%	16%	16%	11%	15%	16%	22%	17%	31%	15%	15%	100%
Lacey	2	1	6	1		10	3	4%	2%	5%	1%	0%	3%	20%	10%	60%	10%	0%	100%
Olympia	5	4	7	2	4	22	3	9%	6%	6%	2%	6%	6%	23%	18%	32%	9%	18%	100%
Tumwater			2	1	1	4	3	0%	0%	2%	1%	2%	1%	0%	0%	50%	25%	25%	100%
Rest of Thurston	6	5	3	5	4	23	1	11%	8%	3%	6%	6%	6%	26%	22%	13%	22%	17%	100%
Over 65 yrs	6	6	16	8	15	51	3	11%	10%	14%	9%	24%	14%	12%	12%	31%	16%	29%	100%
Lacey	1		1	1	4	7	5	2%	0%	1%	1%	6%	2%	14%	0%	14%	14%	57%	100%
Olympia	4	4	8	3	5	24	3	7%	6%	7%	4%	8%	6%	17%	17%	33%	13%	21%	100%
Tumwater			1	1	2	4	5	0%	0%	1%	1%	3%	1%	0%	0%	25%	25%	50%	100%
Rest of Thurston	1	2	6	3	4	16	3	2%	3%	5%	4%	6%	4%	6%	13%	38%	19%	25%	100%
Total	54	62	111	85	62	374	3	100%	100%	100%	100%	100%	100%	14%	17%	30%	23%	17%	100%

Table A7. Cross tabulations for question 7: Supportive of current aviation services at the Olympia Regional Airport, by count and percent of column and row totals, Port of Olympia Citizen Perception Survey, July 2012. (1=least & 5=most)

	-----Count-----						Mode	-----% of Column Total-----						-----% of Row Total-----					
	<u>1</u>	<u>2</u>	<u>3</u>	<u>4</u>	<u>5</u>	Total		<u>1</u>	<u>2</u>	<u>3</u>	<u>4</u>	<u>5</u>	Total	<u>1</u>	<u>2</u>	<u>3</u>	<u>4</u>	<u>5</u>	Total
Male	13	15	31	51	65	175	5	50%	50%	48%	54%	41%	47%	7%	9%	18%	29%	37%	100%
Under 35 yrs	4	2	1	13	14	34	5	15%	7%	2%	14%	9%	9%	12%	6%	3%	38%	41%	100%
Lacey	2	1		2	6	11	5	8%	3%	0%	2%	4%	3%	18%	9%	0%	18%	55%	100%
Olympia	2	1		7	3	13	4	8%	3%	0%	7%	2%	3%	15%	8%	0%	54%	23%	100%
Tumwater					1	1	5	0%	0%	0%	0%	1%	0%	0%	0%	0%	0%	100%	100%
Rest of Thurston			1	4	4	9	4,5	0%	0%	2%	4%	3%	2%	0%	0%	11%	44%	44%	100%
36-50 yrs	4	1	10	12	15	42	5	15%	3%	16%	13%	9%	11%	10%	2%	24%	29%	36%	100%
Lacey		1	2	2	5	8	5	0%	3%	3%	0%	3%	2%	0%	13%	25%	0%	63%	100%
Olympia	2		2	4	4	12	4,5	8%	0%	3%	4%	3%	3%	17%	0%	17%	33%	33%	100%
Tumwater				4	1	5	4	0%	0%	0%	4%	1%	1%	0%	0%	0%	80%	20%	100%
Rest of Thurston	2		6	4	5	17	3	8%	0%	9%	4%	3%	5%	12%	0%	35%	24%	29%	100%
51-65 yrs	2	6	10	14	15	47	5	8%	20%	16%	15%	9%	13%	4%	13%	21%	30%	32%	100%
Lacey				2	4	6	5	0%	0%	0%	2%	3%	2%	0%	0%	0%	33%	67%	100%
Olympia	1	2	5	5	4	17	3,4	4%	7%	8%	5%	3%	5%	6%	12%	29%	29%	24%	100%
Tumwater				1	3	4	5	0%	0%	0%	1%	2%	1%	0%	0%	0%	25%	75%	100%
Rest of Thurston	1	4	5	6	4	20	4	4%	13%	8%	6%	3%	5%	5%	20%	25%	30%	20%	100%
Over 65 yrs	3	6	10	12	21	52	5	12%	20%	16%	13%	13%	14%	6%	12%	19%	23%	40%	100%
Lacey	1	1	5	1	3	11	3	4%	3%	8%	1%	2%	3%	9%	9%	45%	9%	27%	100%
Olympia	1	3	4	3	11	22	5	4%	10%	6%	3%	7%	6%	5%	14%	18%	14%	50%	100%
Tumwater				1	4	5	5	0%	0%	0%	1%	3%	1%	0%	0%	0%	20%	80%	100%
Rest of Thurston	1	2	1	7	3	14	4	4%	7%	2%	7%	2%	4%	7%	14%	7%	50%	21%	100%
Female	13	15	33	43	95	199	5	50%	50%	52%	46%	59%	53%	7%	8%	17%	22%	48%	100%
Under 35 yrs	1	3	3	6	24	37	5	4%	10%	5%	6%	15%	10%	3%	8%	8%	16%	65%	100%
Lacey		2	1	2	6	11	5	0%	7%	2%	2%	4%	3%	0%	18%	9%	18%	55%	100%
Olympia	1	1	2	1	9	14	5	4%	3%	3%	1%	6%	4%	7%	7%	14%	7%	64%	100%
Tumwater				2	3	5	5	0%	0%	0%	2%	2%	1%	0%	0%	0%	40%	60%	100%
Rest of Thurston				1	6	7	5	0%	0%	0%	1%	4%	2%	0%	0%	0%	14%	86%	100%
36-50 yrs	3	5	10	13	21	52	5	12%	17%	16%	14%	13%	14%	6%	10%	19%	25%	40%	100%
Lacey		2	2	1	5	10	5	0%	7%	3%	1%	3%	3%	0%	20%	20%	10%	50%	100%
Olympia	3	3	2	4	6	18	5	12%	10%	3%	4%	4%	5%	17%	17%	11%	22%	33%	100%
Tumwater			3	2	5	3	3	0%	0%	5%	0%	1%	1%	0%	0%	60%	0%	40%	100%
Rest of Thurston			3	8	8	19	4,5	0%	0%	5%	9%	5%	5%	0%	0%	16%	42%	42%	100%
51-65 yrs	4	3	12	11	29	59	5	15%	10%	19%	12%	18%	16%	7%	5%	20%	19%	49%	100%
Lacey			2	2	6	10	5	0%	0%	3%	2%	4%	3%	0%	0%	20%	20%	60%	100%
Olympia	3		9	4	6	22	3	12%	0%	14%	4%	4%	6%	14%	0%	41%	18%	27%	100%
Tumwater				1	3	4	5	0%	0%	0%	1%	2%	1%	0%	0%	0%	25%	75%	100%
Rest of Thurston	1	3	1	4	14	23	5	4%	10%	2%	4%	9%	6%	4%	13%	4%	17%	61%	100%
Over 65 yrs	5	4	8	13	21	51	5	19%	13%	13%	14%	13%	14%	10%	8%	16%	25%	41%	100%
Lacey	2			2	3	7	5	8%	0%	0%	2%	2%	2%	29%	0%	0%	29%	43%	100%
Olympia	1	3	4	6	10	24	5	4%	10%	6%	6%	6%	6%	4%	13%	17%	25%	42%	100%
Tumwater		1	2	1		4	3	0%	3%	3%	1%	0%	1%	0%	25%	50%	25%	0%	100%
Rest of Thurston	2		2	4	8	16	5	8%	0%	3%	4%	5%	4%	13%	0%	13%	25%	50%	100%
Total	26	30	64	94	160	374	5	100%	100%	100%	100%	100%	100%	7%	8%	17%	25%	43%	100%

Table A8. Cross tabulations for question 8: Importance of the Port bringing about economic development, specifically manufacturing jobs, in the rural areas of Thurston County, by count and percent of column and row totals, Port of Olympia Citizen Perception Survey, July 2012. (1=least & 5=most)

	-----Count-----						Mode	-----% of Column Total-----						-----% of Row Total-----					
	1	2	3	4	5	Total		1	2	3	4	5	Total	1	2	3	4	5	Total
Male	11	7	29	50	77	174	5	55%	32%	47%	52%	45%	47%	6%	4%	17%	29%	44%	100%
Under 35 yrs	1	1	4	11	17	34	5	5%	5%	6%	11%	10%	9%	3%	3%	12%	32%	50%	100%
Lacey			1	3	7	11	5	0%	0%	2%	3%	4%	3%	0%	0%	9%	27%	64%	100%
Olympia	1	1	2	4	5	13	5	5%	5%	3%	4%	3%	3%	8%	8%	15%	31%	38%	100%
Tumwater					1	1	5	0%	0%	0%	0%	1%	0%	0%	0%	0%	0%	100%	100%
Rest of Thurston			1	4	4	9	5	0%	0%	2%	4%	2%	2%	0%	0%	11%	44%	44%	100%
36-50 yrs		1	8	12	21	42	5	0%	5%	13%	12%	12%	11%	0%	2%	19%	29%	50%	100%
Lacey			1	2	5	8	5	0%	0%	2%	2%	3%	2%	0%	0%	13%	25%	63%	100%
Olympia			1	3	8	12	5	0%	0%	2%	3%	5%	3%	0%	0%	8%	25%	67%	100%
Tumwater			2	2	1	5	3,4	0%	0%	3%	2%	1%	1%	0%	0%	40%	40%	20%	100%
Rest of Thurston		1	4	5	7	17	5	0%	5%	6%	5%	4%	5%	0%	6%	24%	29%	41%	100%
51-65 yrs	6	2	8	17	13	46	4	30%	9%	13%	18%	8%	12%	13%	4%	17%	37%	28%	100%
Lacey				4	2	6	4	0%	0%	0%	4%	1%	2%	0%	0%	0%	67%	33%	100%
Olympia	3	2	1	7	3	16	4	15%	9%	2%	7%	2%	4%	19%	13%	6%	44%	19%	100%
Tumwater			1		3	4	5	0%	0%	2%	0%	2%	1%	0%	0%	25%	0%	75%	100%
Rest of Thurston	3		6	6	5	20	3,4	15%	0%	10%	6%	3%	5%	15%	0%	30%	30%	25%	100%
Over 65 yrs	4	3	9	10	26	52	5	20%	14%	15%	10%	15%	14%	8%	6%	17%	19%	50%	100%
Lacey		1	1	3	6	11	5	0%	5%	2%	3%	4%	3%	0%	9%	9%	27%	55%	100%
Olympia	1	1	5	3	12	22	5	5%	5%	8%	3%	7%	6%	5%	5%	23%	14%	55%	100%
Tumwater	1		1		3	5	5	5%	0%	2%	0%	2%	1%	20%	0%	20%	0%	60%	100%
Rest of Thurston	2	1	2	4	5	14	5	10%	5%	3%	4%	3%	4%	14%	7%	14%	29%	36%	100%
Female	9	15	33	47	94	198	5	45%	68%	53%	48%	55%	53%	5%	8%	17%	24%	47%	100%
Under 35 yrs		1	10	8	18	37	5	0%	5%	16%	8%	11%	10%	0%	3%	27%	22%	49%	100%
Lacey		1	4	1	5	11	5	0%	5%	6%	1%	3%	3%	0%	9%	36%	9%	45%	100%
Olympia			3	4	7	14	5	0%	0%	5%	4%	4%	4%	0%	0%	21%	29%	50%	100%
Tumwater			1	2	2	5	4,5	0%	0%	2%	2%	1%	1%	0%	0%	20%	40%	40%	100%
Rest of Thurston			2	1	4	7	5	0%	0%	3%	1%	2%	2%	0%	0%	29%	14%	57%	100%
36-50 yrs	1	5	4	14	28	52	5	5%	23%	6%	14%	16%	14%	2%	10%	8%	27%	54%	100%
Lacey				1	9	10	5	0%	0%	0%	1%	5%	3%	0%	0%	0%	10%	90%	100%
Olympia		1	2	6	9	18	5	0%	5%	3%	6%	5%	5%	0%	6%	11%	33%	50%	100%
Tumwater				1	4	5	5	0%	0%	0%	1%	2%	1%	0%	0%	0%	20%	80%	100%
Rest of Thurston	1	4	2	6	6	19	4,5	5%	18%	3%	6%	4%	5%	5%	21%	11%	32%	32%	100%
51-65 yrs	4	5	11	12	26	58	5	20%	23%	18%	12%	15%	16%	7%	9%	19%	21%	45%	100%
Lacey		2		3	4	9	5	0%	9%	0%	3%	2%	2%	0%	22%	0%	33%	44%	100%
Olympia	2	3	4	6	7	22	5	10%	14%	6%	6%	4%	6%	9%	14%	18%	27%	32%	100%
Tumwater			1		3	4	5	0%	0%	2%	0%	2%	1%	0%	0%	25%	0%	75%	100%
Rest of Thurston	2		6	3	12	23	5	10%	0%	10%	3%	7%	6%	9%	0%	26%	13%	52%	100%
Over 65 yrs	4	4	8	13	22	51	5	20%	18%	13%	13%	13%	14%	8%	8%	16%	25%	43%	100%
Lacey	1	1	1		4	7	5	5%	5%	2%	0%	2%	2%	14%	14%	14%	0%	57%	100%
Olympia	3	1	5	4	11	24	5	15%	5%	8%	4%	6%	6%	13%	4%	21%	17%	46%	100%
Tumwater			2	2		4	3,4	0%	0%	3%	2%	0%	1%	0%	0%	50%	50%	0%	100%
Rest of Thurston		2		7	7	16	4,5	0%	9%	0%	7%	4%	4%	0%	13%	0%	44%	44%	100%
Total	20	22	62	97	171	372	5	100%	100%	100%	100%	100%	100%	5%	6%	17%	26%	46%	100%

Table A9.1. Cross tabulations for question 9: Development of hotel on Port property in downtown Olympia, by count and percent of column and row totals, Port of Olympia Citizen Perception Survey, July 2012. (1=least & 5=most)

	-----Count-----						Mode	-----% of Column Total-----						-----% of Row Total-----					
	1	2	3	4	5	Total		1	2	3	4	5	Total	1	2	3	4	5	Total
Male	59	36	37	21	22	175	1	56%	49%	35%	42%	54%	47%	34%	21%	21%	12%	13%	100%
Under 35 yrs	7	9	9	3	6	34	2,3	7%	7%	6%	3%	12%	7%	21%	26%	26%	9%	18%	100%
Lacey	2	4	3		2	11	2	2%	3%	2%	0%	4%	2%	18%	36%	27%	0%	18%	100%
Olympia	2	4	4	2	1	13	2,3	2%	4%	2%	2%	3%	2%	15%	31%	31%	15%	8%	100%
Tumwater				1		1	4	0%	0%	0%	0%	0%	0%	0%	0%	0%	100%	0%	100%
Rest of Thurston	3	1	2		3	9	1,5	3%	0%	3%	0%	5%	2%	33%	11%	22%	0%	33%	100%
36-50 yrs	16	10	7	4	5	42	1	14%	15%	8%	9%	15%	12%	38%	24%	17%	10%	12%	100%
Lacey	4	2		1	1	8	1	3%	3%	0%	1%	2%	2%	50%	25%	0%	13%	13%	100%
Olympia	4	4	1		3	12	1,2	3%	6%	0%	0%	8%	3%	33%	33%	8%	0%	25%	100%
Tumwater	1	2	2			5	2,3	1%	4%	3%	0%	0%	2%	20%	40%	40%	0%	0%	100%
Rest of Thurston	7	2	4	3	1	17	1	8%	3%	5%	8%	4%	6%	41%	12%	24%	18%	6%	100%
51-65 yrs	16	9	12	5	5	47	1	14%	12%	10%	12%	12%	12%	34%	19%	26%	11%	11%	100%
Lacey		3		2	1	6	2	0%	5%	0%	5%	2%	2%	0%	50%	0%	33%	17%	100%
Olympia	8	1	6		2	17	1	8%	1%	5%	0%	5%	4%	47%	6%	35%	0%	12%	100%
Tumwater	1	1	2			4	3	2%	1%	2%	0%	0%	1%	25%	25%	50%	0%	0%	100%
Rest of Thurston	7	4	4	3	2	20	1	5%	5%	3%	7%	6%	5%	35%	20%	20%	15%	10%	100%
Over 65 yrs	20	8	9	9	6	52	1	20%	14%	11%	18%	16%	16%	38%	15%	17%	17%	12%	100%
Lacey	4		2	2	3	11	1	4%	0%	2%	4%	10%	4%	36%	0%	18%	18%	27%	100%
Olympia	8	6	1	4	3	22	1	8%	11%	2%	8%	6%	7%	36%	27%	5%	18%	14%	100%
Tumwater	2		3			5	3	1%	0%	4%	0%	0%	1%	40%	0%	60%	0%	0%	100%
Rest of Thurston	6	2	3	3		14	1	8%	3%	2%	6%	0%	4%	43%	14%	21%	21%	0%	100%
Female	47	42	58	26	25	198	3	44%	51%	65%	58%	46%	53%	24%	21%	29%	13%	13%	100%
Under 35 yrs	11	6	14	2	4	37	1	4%	6%	13%	4%	2%	7%	30%	16%	38%	5%	11%	100%
Lacey	5	2	3		1	11	1	2%	0%	3%	0%	0%	1%	45%	18%	27%	0%	9%	100%
Olympia	1	1	9	1	2	14	3	0%	1%	9%	2%	2%	3%	7%	7%	64%	7%	14%	100%
Tumwater	3	1			1	5	1	2%	2%	0%	0%	0%	1%	60%	20%	0%	0%	20%	100%
Rest of Thurston	2	2	2	1		7	1,2,3	0%	3%	1%	1%	0%	1%	29%	29%	29%	14%	0%	100%
36-50 yrs	15	7	18	8	4	52	3	16%	8%	20%	22%	12%	16%	29%	13%	35%	15%	8%	100%
Lacey	5	1	2		2	10	1	6%	0%	4%	0%	7%	4%	50%	10%	20%	0%	20%	100%
Olympia	4	3	7	2	2	18	3	5%	5%	8%	6%	4%	6%	22%	17%	39%	11%	11%	100%
Tumwater			3	2		5	3	0%	0%	2%	7%	0%	1%	0%	0%	60%	40%	0%	100%
Rest of Thurston	6	3	6	4		19	1,3	6%	2%	6%	9%	0%	5%	32%	16%	32%	21%	0%	100%
51-65 yrs	15	15	11	10	8	59	1,2	18%	22%	14%	16%	16%	17%	25%	25%	19%	17%	14%	100%
Lacey	3	4	1	1	1	10	2	3%	8%	1%	0%	1%	3%	30%	40%	10%	10%	10%	100%
Olympia	4	6	4	3	5	22	2	5%	8%	4%	6%	9%	6%	18%	27%	18%	14%	23%	100%
Tumwater			1	2	1	4	4	0%	0%	1%	2%	4%	1%	0%	0%	25%	50%	25%	100%
Rest of Thurston	8	5	5	4	1	23	1	10%	7%	7%	7%	3%	7%	35%	22%	22%	17%	4%	100%
Over 65 yrs	6	14	15	6	9	50	3	6%	15%	18%	16%	16%	13%	12%	28%	30%	12%	18%	100%
Lacey	1	2	2		2	7	2,3,5	1%	5%	4%	0%	2%	2%	14%	29%	29%	0%	29%	100%
Olympia	3	6	6	5	4	24	2,3	5%	6%	8%	14%	10%	7%	13%	25%	25%	21%	17%	100%
Tumwater	1		3			4	3	0%	0%	3%	0%	0%	1%	25%	0%	75%	0%	0%	100%
Rest of Thurston	1	6	4	1	3	15	2	0%	4%	4%	2%	5%	3%	7%	40%	27%	7%	20%	100%
Total	106	78	95	47	47	373	1	100%	100%	100%	100%	100%	100%	28%	21%	25%	13%	13%	100%

Table A9.2. Cross tabulations for question 9: Development of apartments on Port property in downtown Olympia, by count and percent of column and row totals, Port of Olympia Citizen Perception Survey, July 2012. (1=least & 5=most)

	-----Count-----						Mode	-----% of Column Total-----						-----% of Row Total-----					
	<u>1</u>	<u>2</u>	<u>3</u>	<u>4</u>	<u>5</u>	Total		<u>1</u>	<u>2</u>	<u>3</u>	<u>4</u>	<u>5</u>	Total	<u>1</u>	<u>2</u>	<u>3</u>	<u>4</u>	<u>5</u>	Total
Male	50	38	47	28	12	175		58%	42%	48%	45%	35%	47%	30%	19%	28%	14%	8%	100%
Under 35 yrs	1	11	11	7	4	34	2,3	1%	9%	9%	7%	10%	7%	2%	29%	36%	16%	17%	100%
Lacey		5	4	1	1	11	2	0%	5%	4%	0%	1%	2%	0%	48%	46%	1%	5%	100%
Olympia		5	3	4	1	13	2	0%	3%	3%	5%	4%	2%	0%	23%	31%	29%	18%	100%
Tumwater				1		1	4	0%	0%	0%	0%	0%	0%	0%	0%	100%	0%	0%	100%
Rest of Thurston	1	1	4	1	2	9	3	1%	2%	3%	2%	5%	2%	7%	18%	34%	15%	27%	100%
36-50 yrs	16	9	10	3	4	42	1	17%	13%	11%	6%	15%	12%	33%	22%	25%	7%	13%	100%
Lacey	2	3	2	1		8	2	1%	4%	2%	1%	0%	2%	19%	46%	29%	7%	0%	100%
Olympia	5	1	3	1	2	12	1	4%	0%	3%	2%	9%	3%	30%	3%	28%	8%	31%	100%
Tumwater	2	2	1			5	1,2	3%	4%	1%	0%	0%	2%	36%	48%	16%	0%	0%	100%
Rest of Thurston	7	3	4	1	2	17	1	9%	5%	5%	3%	6%	6%	38%	18%	24%	8%	11%	100%
51-65 yrs	15	9	16	7		47	3	17%	10%	14%	14%	0%	12%	34%	18%	31%	17%	0%	100%
Lacey		1	4	1		6	3	0%	2%	4%	2%	0%	2%	0%	26%	60%	14%	0%	100%
Olympia	8	3	4	2		17	1	9%	2%	3%	5%	0%	4%	51%	11%	19%	19%	0%	100%
Tumwater	1	1	1	1		4	1,2,3,4	2%	2%	0%	2%	0%	1%	43%	28%	7%	22%	0%	100%
Rest of Thurston	6	4	7	3		20	1	6%	4%	6%	5%	0%	5%	29%	20%	36%	15%	0%	100%
Over 65 yrs	18	9	10	11	4	52	1	23%	10%	14%	18%	11%	16%	36%	14%	26%	17%	8%	100%
Lacey	3	3		4	1	11	4	6%	4%	0%	5%	5%	4%	40%	23%	0%	22%	15%	100%
Olympia	7	2	6	4	3	22	1	8%	2%	10%	5%	6%	7%	30%	7%	42%	11%	10%	100%
Tumwater	3		1	1		5	1	2%	0%	2%	3%	0%	1%	33%	0%	39%	28%	0%	100%
Rest of Thurston	5	4	3	2		14	1	7%	4%	3%	5%	0%	4%	43%	21%	17%	19%	0%	100%
Female	36	53	48	32	29	198		42%	58%	52%	55%	65%	53%	19%	24%	28%	16%	14%	100%
Under 35 yrs	7	13	9	2	6	37	2	5%	11%	8%	1%	7%	7%	18%	34%	33%	2%	12%	100%
Lacey	3	4	3	1	1	11	2	2%	0%	3%	0%	0%	1%	37%	7%	54%	0%	1%	100%
Olympia		5	6		3	14	3	0%	6%	5%	0%	6%	3%	0%	36%	45%	0%	19%	100%
Tumwater	2	2			1	5	1,2	2%	2%	0%	0%	0%	1%	51%	48%	0%	0%	2%	100%
Rest of Thurston	2	2		2	1	7	1,2,4	1%	3%	0%	1%	1%	1%	25%	50%	0%	14%	10%	100%
36-50 yrs	8	16	12	12	4	52	2	11%	21%	13%	21%	16%	16%	17%	30%	23%	20%	11%	100%
Lacey	1	3	3	2	1	10	2,3	2%	4%	4%	4%	5%	4%	14%	25%	31%	17%	15%	100%
Olympia	4	7	3	3	1	18	2	6%	10%	4%	6%	3%	6%	24%	37%	17%	15%	6%	100%
Tumwater			1	3	1	5	4	0%	0%	1%	4%	4%	1%	0%	0%	22%	40%	37%	100%
Rest of Thurston	3	6	5	4	1	19	2	3%	7%	4%	7%	3%	5%	15%	33%	23%	22%	8%	100%
51-65 yrs	13	12	15	11	8	59	3	18%	17%	18%	19%	14%	17%	25%	21%	29%	16%	9%	100%
Lacey	2	1	5	1	1	10	3	2%	2%	5%	2%	1%	3%	19%	15%	52%	8%	4%	100%
Olympia	3	6	5	2	6	22	2,5	4%	8%	5%	3%	12%	6%	16%	29%	24%	7%	23%	100%
Tumwater			3	1		4	3	0%	0%	4%	0%	0%	1%	0%	0%	96%	4%	0%	100%
Rest of Thurston	8	5	2	7	1	23	1	11%	6%	3%	14%	1%	7%	38%	20%	12%	29%	1%	100%
Over 65 yrs	8	12	12	7	11	50	2,3	9%	9%	14%	15%	28%	13%	16%	15%	29%	16%	23%	100%
Lacey	2	1		1	3	7	5	3%	2%	0%	3%	7%	2%	29%	17%	0%	21%	33%	100%
Olympia	4	2	9	4	5	24	3	5%	2%	10%	9%	15%	7%	16%	5%	38%	18%	22%	100%
Tumwater		2	2			4	2,3	0%	1%	3%	0%	0%	1%	0%	26%	74%	0%	0%	100%
Rest of Thurston	2	7	1	2	3	15	2	1%	5%	1%	3%	6%	3%	12%	37%	12%	14%	24%	100%
Total	86	91	95	60	41	373		100%	100%	100%	100%	100%	100%	24%	22%	28%	15%	11%	100%

Table A9.3. Cross tabulations for question 9: Development of retail businesses on Port property in downtown Olympia, by count and percent of column and row totals, Port of Olympia Citizen Perception Survey, July 2012. (1=least & 5=most)

	-----Count-----						Mode	-----% of Column Total-----						-----% of Row Total-----					
	1	2	3	4	5	Total		1	2	3	4	5	Total	1	2	3	4	5	Total
Male	24	25	49	44	33	175		62%	72%	43%	41%	41%	47%	15%	16%	25%	24%	21%	100%
Under 35 yrs	3	2	8	10	11	34		3%	4%	5%	8%	11%	7%	4%	6%	20%	32%	38%	100%
Lacey		1	3	4	3	11	4	0%	1%	3%	3%	2%	2%	0%	3%	34%	44%	19%	100%
Olympia	2	1	3	3	4	13	5	1%	3%	1%	2%	5%	2%	6%	14%	13%	17%	50%	100%
Tumwater				1		1	4	0%	0%	0%	0%	0%	0%	0%	0%	0%	100%	0%	100%
Rest of Thurston	1		2	2	4	9	5	1%	0%	1%	3%	4%	2%	7%	0%	15%	35%	43%	100%
36-50 yrs	4	9	11	7	11	42		9%	27%	10%	7%	17%	12%	8%	22%	22%	16%	32%	100%
Lacey		2	2	2	2	8	3,5	0%	6%	1%	1%	2%	2%	0%	35%	23%	19%	23%	100%
Olympia	2	2	3	1	4	12	5	1%	5%	2%	1%	6%	3%	5%	17%	21%	8%	49%	100%
Tumwater		1	2	1	1	5	3	0%	2%	3%	1%	2%	2%	0%	11%	48%	16%	24%	100%
Rest of Thurston	2	4	4	3	4	17	2,3,5	7%	13%	3%	4%	7%	6%	14%	24%	15%	19%	28%	100%
51-65 yrs	8	5	17	12	5	47		21%	13%	14%	11%	6%	12%	19%	11%	32%	26%	12%	100%
Lacey			3	3		6	3,4	0%	0%	3%	3%	0%	2%	0%	0%	52%	48%	0%	100%
Olympia	5	2	4	4	2	17	1	13%	3%	4%	4%	2%	4%	34%	8%	25%	24%	9%	100%
Tumwater	1		2		1	4	3	5%	0%	1%	0%	1%	1%	44%	0%	35%	0%	21%	100%
Rest of Thurston	2	3	8	5	2	20	3	4%	9%	5%	4%	4%	5%	8%	20%	29%	26%	18%	100%
Over 65 yrs	9	9	13	15	6	52		29%	29%	14%	15%	7%	16%	20%	19%	24%	26%	11%	100%
Lacey	2	1		6	2	11	4	9%	4%	0%	4%	4%	4%	28%	13%	0%	32%	27%	100%
Olympia	2	4	10	4	2	22	3	6%	14%	10%	5%	1%	7%	11%	22%	42%	21%	5%	100%
Tumwater	1	1		2	1	5	4	1%	1%	0%	3%	1%	1%	10%	5%	0%	67%	19%	100%
Rest of Thurston	4	3	3	3	1	14	1	13%	10%	4%	2%	1%	4%	33%	24%	25%	15%	4%	100%
Female	16	17	56	56	52	197		38%	28%	57%	59%	59%	53%	8%	5%	30%	31%	26%	100%
Under 35 yrs	4	4	11	9	9	37		2%	5%	7%	9%	6%	7%	4%	8%	30%	36%	22%	100%
Lacey	2	3	4		2	11	3	1%	4%	1%	0%	2%	1%	10%	34%	18%	0%	38%	100%
Olympia			4	6	4	14	4	0%	0%	3%	7%	3%	3%	0%	0%	25%	56%	20%	100%
Tumwater	1		2	1	1	5	3	1%	0%	1%	1%	0%	1%	9%	0%	46%	43%	2%	100%
Rest of Thurston	1	1	1	2	2	7	4,5	0%	1%	2%	1%	1%	1%	3%	8%	48%	17%	24%	100%
36-50 yrs	2	5	13	13	19	52		5%	9%	16%	15%	23%	16%	4%	6%	28%	27%	35%	100%
Lacey			4	3	3	10	3	0%	0%	5%	4%	5%	4%	0%	0%	41%	28%	30%	100%
Olympia	2	1	4	5	6	18	5	5%	4%	5%	6%	8%	6%	10%	7%	23%	26%	34%	100%
Tumwater				1	4	5	5	0%	0%	0%	2%	4%	1%	0%	0%	0%	33%	67%	100%
Rest of Thurston		4	5	4	6	19	5	0%	5%	6%	5%	6%	5%	0%	11%	33%	26%	30%	100%
51-65 yrs	8	2	16	17	15	58		24%	5%	17%	18%	18%	17%	16%	3%	27%	28%	26%	100%
Lacey	2		3	3	2	10	3,4	5%	0%	3%	4%	2%	3%	20%	0%	29%	35%	16%	100%
Olympia	2	1	9	4	6	22	3	6%	3%	9%	4%	6%	6%	11%	5%	41%	18%	24%	100%
Tumwater			1	2	1	4	4	0%	0%	1%	1%	2%	1%	0%	0%	34%	23%	43%	100%
Rest of Thurston	4	1	3	8	6	22	4	13%	2%	4%	9%	8%	7%	20%	3%	14%	35%	28%	100%
Over 65 yrs	2	6	16	17	9	50		6%	9%	17%	17%	11%	13%	5%	7%	34%	35%	20%	100%
Lacey	1		2	2	2	7	3,4,5	2%	0%	3%	2%	2%	2%	10%	0%	37%	29%	25%	100%
Olympia	1	1	10	6	6	24	3	4%	1%	10%	8%	8%	7%	6%	1%	38%	29%	27%	100%
Tumwater			2	2		4	3,4	0%	0%	3%	1%	0%	1%	0%	0%	75%	25%	0%	100%
Rest of Thurston		5	2	7	1	15	2	0%	8%	0%	6%	1%	3%	0%	30%	5%	59%	6%	100%
Total	40	42	105	100	85	372		100%	100%	100%	100%	100%	100%	11%	10%	27%	28%	24%	100%

Table A9.4. Cross tabulations for question 9: Development of boat repair shops and boat rentals on Port property in downtown Olympia, by count and percent of column and row totals, Port of Olympia Citizen Perception Survey, July 2012. (1=least & 5=most)

	-----Count-----						Mode	-----% of Column Total-----						-----% of Row Total-----					
	1	2	3	4	5	Total		1	2	3	4	5	Total	1	2	3	4	5	Total
Male	13	25	59	47	31	175	3	38%	45%	52%	52%	42%	47%	7%	16%	31%	26%	20%	100%
Under 35 yrs	3	9	11	6	5	34	3	2%	13%	5%	6%	7%	7%	3%	32%	21%	19%	25%	100%
Lacey	1	4	2	3	1	11	2	0%	6%	0%	4%	2%	2%	1%	41%	2%	39%	17%	100%
Olympia	2	3	4	2	2	13	3	2%	4%	2%	1%	3%	2%	8%	30%	27%	6%	29%	100%
Tumwater			1			1	3	0%	0%	0%	0%	0%	0%	0%	0%	100%	0%	0%	100%
Rest of Thurston		2	4	1	2	9	3	0%	3%	3%	1%	3%	2%	0%	24%	34%	15%	27%	100%
36-50 yrs	3	5	14	13	7	42	3	10%	9%	14%	15%	11%	12%	7%	12%	31%	29%	20%	100%
Lacey			4	4		8	3,4	0%	0%	3%	4%	0%	2%	0%	0%	46%	54%	0%	100%
Olympia		2	4	3	3	12	3	0%	3%	3%	2%	5%	3%	0%	18%	28%	19%	35%	100%
Tumwater			3	2		5	3	0%	0%	4%	3%	0%	2%	0%	0%	64%	36%	0%	100%
Rest of Thurston	3	3	3	4	4	17	4,5	10%	6%	4%	6%	6%	6%	16%	17%	19%	24%	24%	100%
51-65 yrs	4	5	21	12	5	47	3	11%	12%	17%	13%	6%	12%	8%	16%	38%	26%	12%	100%
Lacey		1	4	1		6	3	0%	3%	4%	1%	0%	2%	0%	26%	60%	14%	0%	100%
Olympia	2	3	4	5	3	17	4	4%	6%	4%	4%	3%	4%	8%	23%	27%	25%	17%	100%
Tumwater			3		1	4	3	0%	0%	2%	0%	2%	1%	0%	0%	56%	0%	44%	100%
Rest of Thurston	2	1	10	6	1	20	3	7%	3%	6%	8%	1%	5%	14%	10%	35%	37%	4%	100%
Over 65 yrs	3	6	13	16	14	52	4	15%	10%	16%	18%	17%	16%	9%	11%	29%	27%	25%	100%
Lacey	1	1	3	3	3	11	3,4,5	5%	0%	3%	3%	6%	4%	14%	0%	24%	23%	40%	100%
Olympia	1	4	4	7	6	22	4	5%	8%	6%	7%	6%	7%	8%	21%	25%	25%	21%	100%
Tumwater		1	2	1	1	5	3	0%	2%	2%	2%	0%	1%	0%	19%	37%	40%	5%	100%
Rest of Thurston	1		4	5	4	14	4	4%	0%	5%	5%	5%	4%	10%	0%	36%	29%	25%	100%
Female	19	32	52	48	46	197	3	62%	55%	48%	48%	58%	53%	11%	17%	25%	22%	25%	100%
Under 35 yrs	3	10	12	4	8	37	3	7%	14%	6%	1%	8%	7%	10%	34%	25%	4%	28%	100%
Lacey	1	2	2	3	3	11	4,5	4%	1%	0%	0%	2%	1%	28%	15%	10%	7%	41%	100%
Olympia	1	5	5		3	14	2,3	2%	9%	3%	0%	4%	3%	5%	43%	27%	0%	25%	100%
Tumwater		2	2		1	5	2,3	0%	3%	0%	0%	2%	1%	0%	53%	6%	0%	41%	100%
Rest of Thurston	1	1	3	1	1	7	3	1%	1%	2%	1%	0%	1%	8%	16%	51%	14%	10%	100%
36-50 yrs	1	9	12	16	14	52	4	5%	20%	11%	19%	18%	16%	3%	21%	20%	29%	26%	100%
Lacey		3	2	2	3	10	2,5	0%	7%	4%	3%	3%	4%	0%	32%	30%	18%	20%	100%
Olympia	1	3	2	7	5	18	4	5%	7%	2%	9%	7%	6%	8%	19%	8%	38%	27%	100%
Tumwater		1		1	3	5	5	0%	2%	0%	2%	3%	1%	0%	22%	0%	33%	45%	100%
Rest of Thurston		2	8	6	3	19	3	0%	4%	6%	5%	5%	5%	0%	14%	34%	26%	25%	100%
51-65 yrs	12	5	13	18	10	58	4	37%	13%	15%	19%	12%	17%	20%	13%	24%	26%	17%	100%
Lacey	2		4	2	2	10	3	6%	0%	4%	3%	2%	3%	19%	0%	41%	23%	16%	100%
Olympia	4	2	4	7	5	22	4	12%	6%	4%	7%	5%	6%	19%	16%	19%	28%	18%	100%
Tumwater			1	3		4	4	0%	0%	2%	3%	0%	1%	0%	0%	43%	57%	0%	100%
Rest of Thurston	6	3	4	6	3	22	1,4	20%	8%	5%	6%	6%	7%	26%	17%	18%	21%	18%	100%
Over 65 yrs	3	8	15	10	14	50	3	13%	9%	15%	9%	20%	13%	9%	10%	31%	17%	33%	100%
Lacey		1	2	1	3	7	5	0%	1%	2%	2%	4%	2%	0%	10%	25%	21%	44%	100%
Olympia	2	5	6	3	8	24	5	10%	5%	7%	4%	11%	7%	13%	12%	27%	14%	34%	100%
Tumwater			2	2		4	3,4	0%	0%	3%	1%	0%	1%	0%	0%	75%	25%	0%	100%
Rest of Thurston	1	2	5	4	3	15	3	3%	2%	3%	2%	4%	3%	9%	12%	31%	16%	33%	100%
Total	32	57	111	95	77	372	3	100%	100%	100%	100%	100%	100%	9%	16%	28%	24%	23%	100%

Table A9.1.5. Cross tabulations for question 9: Development of manufacturing on Port property in downtown Olympia, by count and percent of column and row totals, Port of Olympia Citizen Perception Survey, July 2012. (1=least & 5=most)

	-----Count-----						Mode	-----% of Column Total-----						-----% of Row Total-----					
	1	2	3	4	5	Total		1	2	3	4	5	Total	1	2	3	4	5	Total
Male	38	30	36	39	31	174													
Under 35 yrs	2	9	8	9	6	34	4	0%	44%	12%	7%	9%	7%	1%	25%	36%	17%	21%	100%
Lacey		2	1	5	3	11	4	0%	2%	0%	5%	5%	2%	0%	21%	1%	41%	37%	100%
Olympia	1	4	4	3	1	13	2,3	0%	4%	6%	1%	1%	2%	3%	31%	51%	11%	4%	100%
Tumwater				1		1	4	0%	0%	0%	0%	0%	0%	0%	0%	0%	100%	0%	100%
Rest of Thurston	1	3	3		2	9	2,3	0%	3%	6%	0%	3%	2%	1%	22%	53%	0%	24%	100%
36-50 yrs	9	5	7	11	10	42	4	11%	6%	13%	16%	19%	12%	23%	9%	21%	22%	26%	100%
Lacey	3	1		2	2	8	1	3%	1%	0%	3%	2%	2%	41%	7%	0%	29%	22%	100%
Olympia	1	2	2	5	2	12	4	1%	2%	3%	5%	4%	3%	11%	13%	22%	30%	23%	100%
Tumwater	1	1	2	1		5	3	2%	1%	4%	2%	0%	2%	24%	11%	48%	16%	0%	100%
Rest of Thurston	4	1	3	3	6	17	5	5%	2%	5%	6%	12%	6%	22%	6%	18%	17%	36%	100%
51-65 yrs	10	9	14	8	5	46	3	10%	14%	14%	11%	11%	12%	23%	22%	24%	16%	15%	100%
Lacey			2	4		6	4	0%	0%	4%	6%	0%	2%	0%	0%	45%	55%	0%	100%
Olympia	5	3	5	2	2	17	1,3	5%	4%	5%	3%	4%	4%	30%	19%	24%	11%	16%	100%
Tumwater	1	1	1		1	4	1,2,3,5	1%	3%	0%	0%	1%	1%	28%	44%	7%	0%	21%	100%
Rest of Thurston	4	5	6	2	2	19	3	4%	7%	5%	3%	5%	5%	23%	29%	20%	10%	18%	100%
Over 65 yrs	17	7	7	11	10	52	1	19%	14%	10%	16%	19%	16%	31%	17%	13%	18%	20%	100%
Lacey	2	1	2	4	2	11	4	2%	2%	1%	8%	6%	4%	17%	10%	4%	40%	29%	100%
Olympia	8	4	4	2	4	22	1	9%	8%	8%	0%	7%	7%	35%	22%	24%	1%	18%	100%
Tumwater	2	1		1	1	5	1	1%	3%	0%	1%	2%	1%	14%	40%	0%	19%	28%	100%
Rest of Thurston	5	1	1	4	3	14	1	7%	2%	2%	7%	3%	4%	43%	8%	9%	27%	13%	100%
Female	51	42	44	30	30	197	1	60%	56%	51%	50%	43%	53%	30%	20%	20%	16%	14%	100%
Under 35 yrs	8	7	11	4	7	37	3	6%	11%	7%	1%	9%	7%	22%	31%	21%	3%	23%	100%
Lacey	3		3	3	2	11	1,3,4	2%	0%	1%	1%	3%	1%	38%	0%	15%	7%	40%	100%
Olympia	3	3	5		3	14	3	3%	5%	5%	0%	3%	3%	23%	28%	30%	0%	18%	100%
Tumwater	1	1	1		2	5	5	0%	2%	0%	0%	2%	1%	9%	43%	5%	0%	43%	100%
Rest of Thurston	1	3	2	1		7	2	0%	4%	1%	1%	0%	1%	8%	67%	14%	10%	0%	100%
36-50 yrs	11	11	11	9	10	52	1,2,3	14%	13%	16%	20%	16%	16%	24%	15%	21%	22%	18%	100%
Lacey	1	1	3	4	1	10	4	1%	3%	6%	9%	1%	4%	7%	14%	32%	44%	3%	100%
Olympia	5	3	3	2	5	18	1,5	9%	5%	3%	3%	9%	6%	39%	15%	11%	9%	26%	100%
Tumwater	1	1	1		2	5	5	2%	0%	1%	0%	3%	1%	33%	3%	22%	0%	43%	100%
Rest of Thurston	4	6	4	3	2	19	2	3%	5%	5%	8%	3%	5%	17%	21%	23%	28%	11%	100%
51-65 yrs	19	11	13	11	4	58	1	24%	16%	15%	20%	6%	17%	37%	17%	19%	21%	6%	100%
Lacey	4	2	1	3		10	1	5%	3%	2%	4%	0%	3%	45%	17%	12%	26%	0%	100%
Olympia	7	4	8	2	1	22	3	9%	3%	9%	4%	2%	6%	39%	11%	32%	13%	6%	100%
Tumwater		2		1	1	4	2	0%	3%	0%	3%	0%	1%	0%	53%	0%	43%	4%	100%
Rest of Thurston	8	3	4	5	2	22	1	10%	7%	5%	9%	3%	7%	39%	18%	13%	22%	8%	100%
Over 65 yrs	13	13	9	6	9	50	1,2	16%	16%	13%	9%	12%	14%	32%	22%	19%	11%	16%	100%
Lacey	2	1	1	1	2	7	1,5	3%	1%	2%	3%	3%	2%	31%	8%	18%	23%	21%	100%
Olympia	9	6	4	2	3	24	1	12%	10%	6%	3%	5%	7%	42%	24%	15%	7%	11%	100%
Tumwater		1	2	1		4	3	0%	1%	3%	1%	0%	1%	0%	26%	65%	9%	0%	100%
Rest of Thurston	2	5	2	2	4	15	2	2%	4%	2%	2%	4%	3%	17%	27%	14%	14%	28%	100%
Total	89	72	80	69	61	371	1	100%	100%	100%	100%	100%	100%	27%	19%	20%	17%	17%	100%

Table A9.6. Cross tabulations for question 9: Development of parks and trails on Port property in downtown Olympia, by count and percent of column and row totals, Port of Olympia Citizen Perception Survey, July 2012. (1=least & 5=most)

	-----Count-----						Mode	-----% of Column Total-----						-----% of Row Total-----					
	<u>1</u>	<u>2</u>	<u>3</u>	<u>4</u>	<u>5</u>	Total		<u>1</u>	<u>2</u>	<u>3</u>	<u>4</u>	<u>5</u>	Total	<u>1</u>	<u>2</u>	<u>3</u>	<u>4</u>	<u>5</u>	Total
Male	20	11	26	48	70	175	5	70%	72%	43%	48%	42%	47%	12%	8%	12%	25%	43%	100%
Under 35 yrs		1	10	9	14	34	5	0%	7%	11%	5%	8%	7%	0%	6%	21%	20%	53%	100%
Lacey			3	2	6	11	5	0%	0%	3%	0%	4%	2%	0%	0%	17%	1%	81%	100%
Olympia			4	4	5	13	5	0%	0%	4%	2%	3%	2%	0%	0%	24%	24%	52%	100%
Tumwater					1	1	5	0%	0%	0%	0%	0%	0%	0%	0%	0%	0%	100%	100%
Rest of Thurston		1	3	3	2	9	3,4	0%	7%	4%	3%	1%	2%	0%	18%	23%	32%	27%	100%
36-50 yrs	5	3	2	15	17	42	5	17%	24%	3%	14%	12%	12%	10%	10%	4%	29%	47%	100%
Lacey	1			2	5	8	5	2%	0%	0%	1%	3%	2%	8%	0%	0%	12%	80%	100%
Olympia	1			6	5	12	4	2%	0%	0%	5%	3%	3%	6%	0%	0%	42%	53%	100%
Tumwater			2	2	1	5	3,4	0%	0%	3%	3%	1%	2%	0%	0%	27%	48%	25%	100%
Rest of Thurston	3	3		5	6	17	5	13%	24%	0%	5%	5%	6%	17%	22%	0%	21%	40%	100%
51-65 yrs	6	3	4	16	18	47	5	20%	12%	6%	17%	10%	12%	13%	5%	7%	35%	40%	100%
Lacey		1	2	1	2	6	3,5	0%	5%	4%	2%	1%	2%	0%	14%	30%	26%	30%	100%
Olympia	2	2	1	7	5	17	4	8%	7%	1%	8%	2%	4%	15%	8%	4%	45%	28%	100%
Tumwater				2	2	4	4,5	0%	0%	0%	2%	2%	1%	0%	0%	0%	35%	65%	100%
Rest of Thurston	4		1	6	9	20	5	12%	0%	1%	6%	5%	5%	19%	0%	2%	29%	50%	100%
Over 65 yrs	9	4	10	8	21	52	5	33%	30%	23%	11%	12%	16%	17%	10%	20%	17%	37%	100%
Lacey	2		2	2	5	11	5	6%	0%	7%	3%	3%	4%	14%	0%	27%	20%	39%	100%
Olympia	5	1	4	3	9	22	5	18%	10%	6%	4%	6%	7%	22%	8%	12%	14%	43%	100%
Tumwater	1	1	1		2	5	5	3%	10%	3%	0%	0%	1%	19%	40%	28%	0%	14%	100%
Rest of Thurston	1	2	3	3	5	14	5	5%	10%	7%	4%	3%	4%	10%	13%	22%	23%	32%	100%
Female	6	5	24	53	109	197	5	30%	28%	57%	52%	58%	53%	4%	3%	15%	25%	53%	100%
Under 35 yrs			7	13	17	37	5	0%	0%	15%	8%	6%	7%	0%	0%	31%	28%	40%	100%
Lacey			4	5	2	11	4	0%	0%	8%	1%	0%	1%	0%	0%	80%	14%	6%	100%
Olympia			2	3	9	14	5	0%	0%	4%	4%	4%	3%	0%	0%	15%	33%	52%	100%
Tumwater				3	2	5	4	0%	0%	0%	2%	1%	1%	0%	0%	0%	57%	43%	100%
Rest of Thurston			1	2	4	7	5	0%	0%	4%	0%	1%	1%	0%	0%	48%	9%	44%	100%
36-50 yrs	1	4	4	15	28	52	5	3%	27%	11%	16%	18%	16%	2%	9%	10%	25%	55%	100%
Lacey		1		3	6	10	5	0%	5%	0%	5%	5%	4%	0%	7%	0%	32%	60%	100%
Olympia		1	1	7	9	18	5	0%	6%	3%	8%	7%	6%	0%	6%	8%	33%	54%	100%
Tumwater			1		4	5	5	0%	0%	2%	0%	2%	1%	0%	0%	22%	0%	78%	100%
Rest of Thurston	1	2	2	5	9	19	5	3%	16%	5%	3%	5%	5%	6%	18%	15%	16%	45%	100%
51-65 yrs	3		6	13	36	58	5	18%	0%	15%	15%	20%	17%	8%	0%	12%	22%	58%	100%
Lacey	1		2	4	3	10	4	6%	0%	5%	3%	2%	3%	17%	0%	23%	25%	35%	100%
Olympia	1		2	2	17	22	5	5%	0%	5%	2%	9%	6%	7%	0%	11%	10%	73%	100%
Tumwater			1		3	4	4	0%	0%	4%	0%	1%	1%	0%	0%	43%	0%	57%	100%
Rest of Thurston	1		1	7	13	22	5	7%	0%	2%	10%	8%	7%	7%	0%	3%	35%	55%	100%
Over 65 yrs	2	1	7	12	28	50	5	8%	1%	16%	14%	15%	13%	5%	0%	16%	26%	53%	100%
Lacey			2	1	4	7	5	0%	0%	7%	2%	2%	2%	0%	0%	40%	18%	42%	100%
Olympia	1	1	3	5	14	24	5	5%	1%	5%	8%	9%	7%	6%	1%	8%	26%	59%	100%
Tumwater			1	2	1	4	4	0%	0%	4%	1%	0%	1%	0%	0%	49%	35%	16%	100%
Rest of Thurston	1		1	4	9	15	5	3%	0%	1%	3%	3%	3%	9%	0%	5%	27%	59%	100%
Total	26	16	50	101	179	372	5	100%	100%	100%	100%	100%	100%	8%	5%	14%	25%	48%	100%

Table A9.1.7. Cross tabulations for question 9: Development of restaurants and cafes on Port property in downtown Olympia, by count and percent of column and row totals, Port of Olympia Citizen Perception Survey, July 2012. (1=least & 5=most)

	-----Count-----						Mode	-----% of Column Total-----						-----% of Row Total-----					
	<u>1</u>	<u>2</u>	<u>3</u>	<u>4</u>	<u>5</u>	<u>Total</u>		<u>1</u>	<u>2</u>	<u>3</u>	<u>4</u>	<u>5</u>	<u>Total</u>	<u>1</u>	<u>2</u>	<u>3</u>	<u>4</u>	<u>5</u>	<u>Total</u>
Male	21	18	47	53	36	175		58%	73%	51%	45%	36%	47%	13%	11%	25%	29%	22%	100%
Under 35 yrs	1	4	10	10	9	34	4	3%	20%	8%	3%	9%	7%	4%	21%	26%	12%	37%	100%
Lacey	1		5	2	3	11	3	3%	0%	2%	1%	4%	2%	13%	0%	19%	12%	56%	100%
Olympia		1	3	6	3	13	4	0%	6%	3%	2%	3%	2%	0%	18%	26%	22%	34%	100%
Tumwater				1		1	4	0%	0%	0%	0%	0%	0%	0%	0%	0%	100%	0%	100%
Rest of Thurston		3	2	1	3	9	2,5	0%	14%	3%	0%	2%	2%	0%	46%	32%	1%	22%	100%
36-50 yrs	4	5	12	10	11	42	3	13%	16%	16%	9%	12%	12%	11%	10%	30%	21%	28%	100%
Lacey	2	1		2	3	8	5	5%	3%	0%	1%	3%	2%	32%	11%	0%	17%	40%	100%
Olympia		2	4	3	3	12	3	0%	5%	6%	2%	3%	3%	0%	12%	44%	18%	26%	100%
Tumwater			4	1		5	3	0%	0%	6%	1%	0%	2%	0%	0%	76%	24%	0%	100%
Rest of Thurston	2	2	4	4	5	17	5	8%	8%	5%	5%	7%	6%	14%	11%	18%	24%	33%	100%
51-65 yrs	6	6	14	14	7	47	3,4	14%	19%	15%	13%	6%	12%	13%	11%	29%	32%	15%	100%
Lacey			1	5		6	4	0%	0%	1%	5%	0%	2%	0%	0%	16%	84%	0%	100%
Olympia	2	4	5	3	3	17	3	5%	14%	4%	4%	2%	4%	12%	24%	23%	27%	13%	100%
Tumwater			2	2		4	3,4	0%	0%	4%	1%	0%	1%	0%	0%	72%	28%	0%	100%
Rest of Thurston	4	2	6	4	4	20	3	9%	5%	6%	3%	4%	5%	21%	7%	29%	17%	26%	100%
Over 65 yrs	10	3	11	19	9	52	4	28%	18%	12%	21%	8%	16%	20%	8%	18%	39%	15%	100%
Lacey	1		2	5	3	11	4	4%	0%	2%	6%	2%	4%	14%	0%	15%	51%	20%	100%
Olympia	5	1	2	9	5	22	4	12%	4%	2%	10%	5%	7%	20%	5%	7%	45%	23%	100%
Tumwater			2	2	1	5	3,4	0%	0%	3%	2%	0%	1%	0%	0%	44%	46%	10%	100%
Rest of Thurston	4	2	5	3		14	3	12%	13%	5%	2%	0%	4%	30%	24%	29%	18%	0%	100%
Female	13	8	41	63	70	195	5	42%	27%	49%	55%	64%	53%	9%	4%	22%	31%	35%	100%
Under 35 yrs	1	10	12	14	14	37	5	0%	1%	10%	7%	8%	7%	0%	1%	33%	31%	34%	100%
Lacey			4	4	3	11	3,4	0%	0%	3%	1%	2%	1%	0%	0%	47%	13%	41%	100%
Olympia			3	5	6	14	5	0%	0%	3%	6%	4%	3%	0%	0%	18%	50%	32%	100%
Tumwater		1	1	1	2	5	5	0%	1%	2%	0%	1%	1%	0%	9%	43%	5%	43%	100%
Rest of Thurston			2	2	3	7	5	0%	0%	3%	1%	1%	1%	0%	0%	56%	17%	27%	100%
36-50 yrs	2	2	10	17	21	52	5	6%	11%	15%	15%	22%	16%	5%	5%	22%	29%	40%	100%
Lacey		1	3	3	3	10	3,4,5	0%	7%	4%	3%	4%	4%	0%	15%	27%	28%	30%	100%
Olympia		1	3	5	9	18	5	0%	4%	6%	4%	11%	6%	0%	5%	23%	20%	52%	100%
Tumwater	1			2	2	5	4,5	4%	0%	0%	1%	2%	1%	33%	0%	0%	27%	40%	100%
Rest of Thurston	1		4	7	7	19	4,5	2%	0%	5%	6%	6%	5%	6%	0%	22%	40%	33%	100%
51-65 yrs	6	1	14	17	19	57	5	19%	3%	17%	18%	19%	17%	12%	1%	23%	31%	32%	100%
Lacey	1		5	2	2	10	3	4%	0%	5%	2%	2%	3%	17%	0%	44%	19%	20%	100%
Olympia	2		4	7	9	22	5	6%	0%	3%	8%	8%	6%	11%	0%	13%	38%	38%	100%
Tumwater			1	1	1	3	3,4,5	0%	0%	2%	2%	1%	1%	0%	0%	36%	45%	20%	100%
Rest of Thurston	3	1	4	7	7	22	4,5	9%	3%	6%	7%	9%	7%	13%	3%	21%	28%	35%	100%
Over 65 yrs	5	4	7	17	16	49	4	16%	12%	8%	15%	15%	13%	13%	7%	14%	34%	31%	100%
Lacey	1	1	1	1	3	7	5	2%	7%	2%	1%	3%	2%	10%	21%	19%	18%	33%	100%
Olympia	3	2	4	7	8	24	5	13%	5%	4%	8%	8%	7%	19%	5%	12%	32%	32%	100%
Tumwater			2	2		4	3,4	0%	0%	3%	1%	0%	1%	0%	0%	58%	42%	0%	100%
Rest of Thurston	1	1		7	5	14	4	1%	1%	0%	5%	4%	3%	5%	2%	0%	52%	40%	100%
Total	34	26	88	116	106	370	4	100%	100%	100%	100%	100%	100%	11%	7%	23%	30%	29%	100%

Port of Olympia - Citizen Perception Survey

QUESTIONNAIRE

Please read the following paragraph prior to asking any questions:

Hello, I am a Saint Martin's student and I am calling to invite you to participate in a completely voluntary survey for the purpose of assessing how the Port of Olympia can best communicate with citizens, and what citizens know about the Port of Olympia. The survey is being carried out through a joint partnership of Saint Martin's University and the Port of Olympia. To participate, you will only need to answer a few questions. There will be complete privacy of the information you supply, because your name will never be used or associated with the project. You are free to choose to participate or not participate, and you may stop your participation at any time. Whether you participate or not will have no detrimental effect on your relationship with any of the participating parties in this survey. By completing this questionnaire you are giving your consent to participate in the project and you are certifying that you are over 18 years old and have no disorder or conflict of interest which would preclude you from participating in this survey.

Ask if they are a resident of Thurston County: YES NO

If they agree to participate, continue with the questions below. (Scale of 1-5 with 1=least, 5=most)

- 1) How familiar are you with the role of the Port of Olympia in Thurston County?
Least 1-----2-----3-----4-----5 Most

- 2) How important is it to you to see the Port, which is an international seaport, increase its shipping business?
Least 1-----2-----3-----4-----5 Most

- 3) How important is it to you for the Port of Olympia to commit resources towards any environmental issues on Port-owned property?
Least 1-----2-----3-----4-----5 Most

- 4) How important is it to you for the Port of Olympia to expand the opportunities for recreational boating in Budd Inlet and Thurston County waters?
Least 1-----2-----3-----4-----5 Most

- 5) The Port requires periodic dredging to continue its marine operations. Dredging also helps clean up Budd Inlet. How supportive are you of using public dollars to dredge Budd Inlet?
Least 1-----2-----3-----4-----5 Most

- 6) How important is it for the Port of Olympia to add a fuel dock on Port property for fuel sales to local boaters and to boaters who visit Thurston County? Least 1-----2-----3-----4-----5 Most

- 7) How supportive are you of the current aviation services at the Olympia Regional Airport which include: Air ambulance, State Patrol law enforcement, fire suppression, State Fish & Wildlife programs, civilian and military flight training, and corporate and general aviation?
Least 1-----2-----3-----4-----5 Most

- 8) How important is it to have the Port bring about economic development – specifically manufacturing jobs – in the rural areas of Thurston County?
Least 1-----2-----3-----4-----5 Most

9) What types of development would you most like to see on Port Property in downtown Olympia?

Hotel	Least	1-----2-----3-----4-----5	Most
Apartments	Least	1-----2-----3-----4-----5	Most
Retail businesses	Least	1-----2-----3-----4-----5	Most
Boat repair shops and boat rentals	Least	1-----2-----3-----4-----5	Most
Manufacturing	Least	1-----2-----3-----4-----5	Most
Parks and trails	Least	1-----2-----3-----4-----5	Most
Restaurants and cafes	Least	1-----2-----3-----4-----5	Most
Other _____	Least	1-----2-----3-----4-----5	Most

10) Rank your top three methods of learning about the Port of Olympia? (1=top choice & 3= least choice)

___ Port of Olympia website	___ Radio
___ Port Open Houses	___ At a meeting of a community org.
___ Port Commission meetings	___ U.S. Mail
___ Thurston Comm. TV (TCTV Ch3)	___ Facebook and Twitter
___ Email	___ Word of mouth through family or friends
___ The Olympian newspaper (paper)	___ Internet/blogs
___ The Olympian newspaper (online)	___ Other _____
___ Other newspaper. If so, which one? _____	

11) If you wanted information about the Port, what methods would work best for you?

Port of Olympia website:	Least	1-----2-----3-----4-----5	Most	
Port Open Houses:	Least	1-----2-----3-----4-----5	Most	
Port Commission meetings:	Least	1-----2-----3-----4-----5	Most	
Thurston Comm. TV (TCTV Ch3):	Least	1-----2-----3-----4-----5	Most	
Email:	Least	1-----2-----3-----4-----5	Most	Email _____
The Olympian newspaper (paper):	Least	1-----2-----3-----4-----5	Most	
The Olympian newspaper (online):	Least	1-----2-----3-----4-----5	Most	
Other newspaper:	Least	1-----2-----3-----4-----5	Most	Name _____
Radio:	Least	1-----2-----3-----4-----5	Most	Name _____
At a meeting of a community org:	Least	1-----2-----3-----4-----5	Most	Name _____
U.S. Mail:	Least	1-----2-----3-----4-----5	Most	
Facebook and Twitter:	Least	1-----2-----3-----4-----5	Most	
Other _____	Least	1-----2-----3-----4-----5	Most	

DEMOGRAPHIC QUESTIONS

Gender: ___ Male ___ Female

Age: ___ Under 35 ___ 36-50 ___ 51-65 ___ Over 65

Do you consider yourself a resident of:

___ Lacey ___ Olympia ___ Tumwater ___ Unincorporated Thurston County

Please read: *On behalf of the Port of Olympia and Saint Martin's University, we would like to thank you for participating in this very important survey. Results of the survey will be available at Port of Olympia by June 1, 2012. At that time, you can receive a copy by calling 528-8000.*